

Potato loading bucket

HOD/HOD-F/HOD-Z/HOD-ZF



HOD



HOD-F



HOD-Z



HOD-Z-F



Englisch

Table of contents

1.	To the user	4
1.1	Introduction.....	4
1.2	Language and translations.....	4
1.3	Safety instructions and warnings	5
1.3.1	Safety regulations	5
1.3.2	Safety stickers and warning graphics.....	8
1.3.3	Location of safety stickers on the machine	8
1.4	Use Purpose.....	9
1.5	Liability.....	10
1.6	Warranty.....	10
2.	Technical data	11
2.1	General technical data.....	11
2.2	HOD.....	12
2.2.1	Parts list.....	12
2.3	HOD-F.....	14
2.3.1	Parts list.....	14
2.4	HOD-Z.....	16
2.4.1	Parts list.....	16
2.5	HOD-Z-F (1 cylinder)	18
2.5.1	Parts list.....	18
2.6	HOD-Z-F (2 cylinders).....	20
2.6.1	Parts list.....	20
2.6.2	Commissioning a hydraulic loading bucket on forks	22
2.6.3	Commissioning of hydraulic loading bucket on forkboard	22
3.	Maintenance and breakdowns	23
3.1	General safety regulations.....	23
3.2	Required Personal Protective Equipment (PPE).....	23
3.3	Specific Safety Measures	23
3.4	Compliance and responsibility.....	24
3.5	Preventive maintenance and lubrication	24
3.6	Work to be performed by a skilled mechanic	25
3.6.1	Instructions for replacing the blade and/or slice strips	25

1. To the user

1.1 Introduction

The purpose of this manual is to inform you about the commissioning, operation and maintenance of your new WIFO Hydraulic loading bucket. In addition, this manual contains safety instructions, which ensure hazard-free application.

WIFO-Anema B.V. is constantly striving to improve its products. WIFO-Anema B.V. reserves the right to make all changes and improvements it deems necessary.

Before commissioning, thoroughly read and observe the manual and safety instructions. If any questions remain open after reading the manual, it is best to contact your dealer.

We wish you much working pleasure with your WIFO hydraulic loading bucket.



CAUTION:

Read this manual carefully before operating the machine and follow all instructions. This is to ensure safe, trouble-free operation.

Keep this manual carefully for future use!

WIFO-Anema B.V.


Dealer:


1.2 Language and translations

This manual is a translation of the original Dutch version. In case of discrepancies between translations and the Dutch version, the Dutch text prevails.

1.3 Safety regulations and warnings

Please read this manual before using the machine for the first time and absolutely observe the safety instructions. Particularly important places are marked with a pictogram.

	<p><i>You will find this sign at all important safety instructions in this manual. Observe the instructions carefully and act with particular caution in these cases.</i></p>
---	---

	<p><i>This symbol can be found on all important safety instructions in this manual. Follow the instructions carefully and act with special care in such cases.</i></p>
---	--

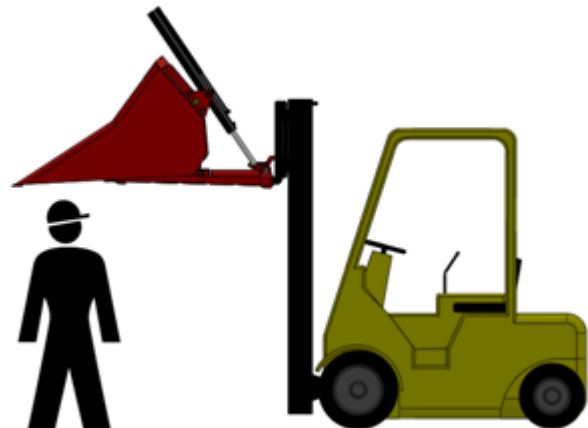
All persons entrusted with the commissioning, operation and maintenance of the machine must carefully read and observe the following instructions.

1.3.1 Safety regulations

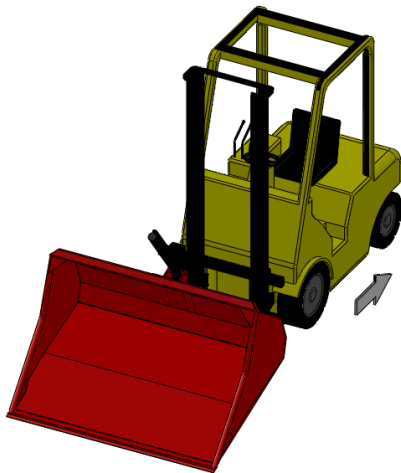
The following safety regulations apply to every type of WIFO hydraulic loading bucket. No distinction is made here for the lifting vehicle used.



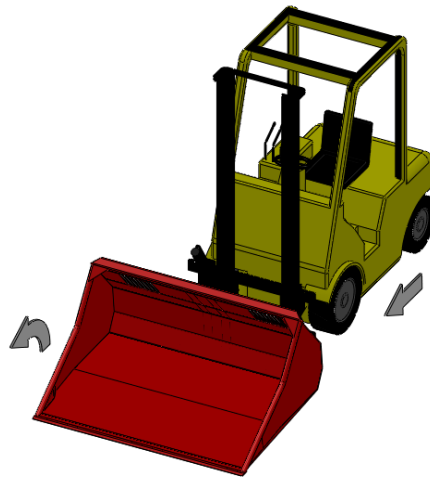
Do not let anyone ride along.



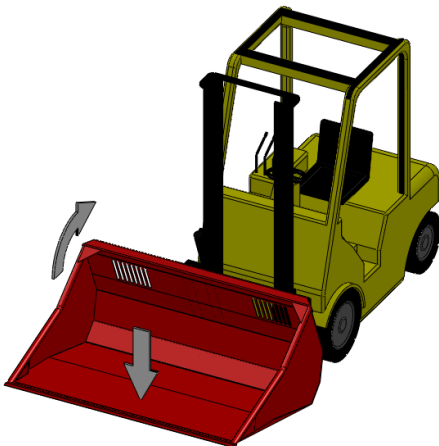
Never stand under the bucket and be mindful of products falling out of the Bucket.



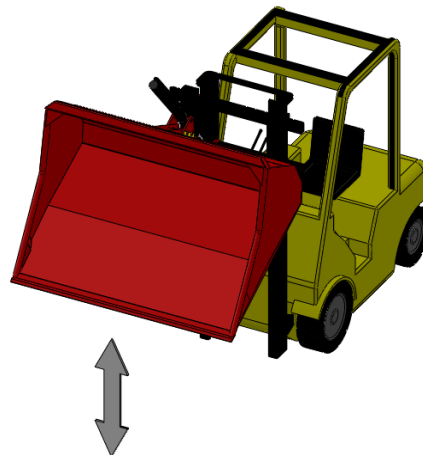
To prevent damage to the cylinder, do not drive backward (forklift) or forward (tractor with lift mast) when the Bucket is tipped and the blade of the bucket is resting on the surface.



When scooping loads, make sure the scoop bucket is horizontal or slightly forward (max. 15°). Make sure the blade does not go under or behind a ledge to prevent damage.



When transporting, tilt the scoop bucket backwards to prevent the load from falling off. Transport cargo with the scoop bucket as low as possible to keep the transporting implement as stable as possible.



When unloading the scoop bucket, ensure that there is sufficient distance between the scoop bucket and the surface to prevent unnecessary damage to the scoop bucket.



Operate the scoop bucket only from the operator's seat of the lifting equipment. Ensure that there is always adequate visibility of the work from this position.

Distribute the load as evenly as possible across the width of the scoop bucket. Keep the center of gravity of the load as close to the fork carriage as possible. Load the scoop bucket in such a way that the load cannot fall off unexpectedly.

Ensure that the tilt control lever cannot be confused with other control levers to prevent accidental operation.


Ensure that the hydraulic hoses cannot become trapped and the scoop bucket with the cylinder (at its highest point) can rotate freely.

Ensure that everyone remains sufficiently out of the working area of the scoop bucket at all times.

Always keep sufficient pressure on all implement wheels to keep the combination stable and steerable; therefore, take into account shifting the center of gravity during tipping of Bucket and take special care when working in rough terrain and on slopes. If necessary, use counterweights and/or dual air.

Put the forklift/lifting mast away only with the scoop bucket in the lowest position with the scoop bucket flat on the ground. Make sure the combination cannot make unexpected movements when the forklift/tractor is not in use. Disconnect the hydraulic hoses if necessary.

1.3.2 Safety decals and warning graphics

	<p>Working safely also means being well informed about the various safety decals on the machine. You must have a good understanding of what they are warning you about.</p> <p>Stickers that are loose, illegible or off the machine should be replaced.</p>
--	--

There are a number of safety stickers on the machine. The stickers used on this machine have the following meanings:

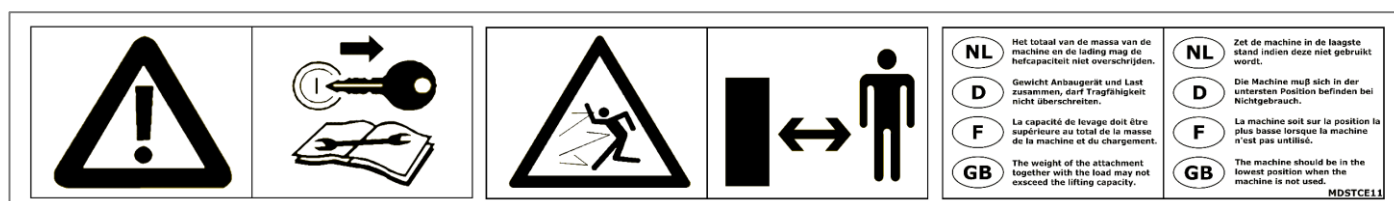


Figure 1.3.1. Safety sticker WIFO

1.3.3 Location of safety stickers on the machine

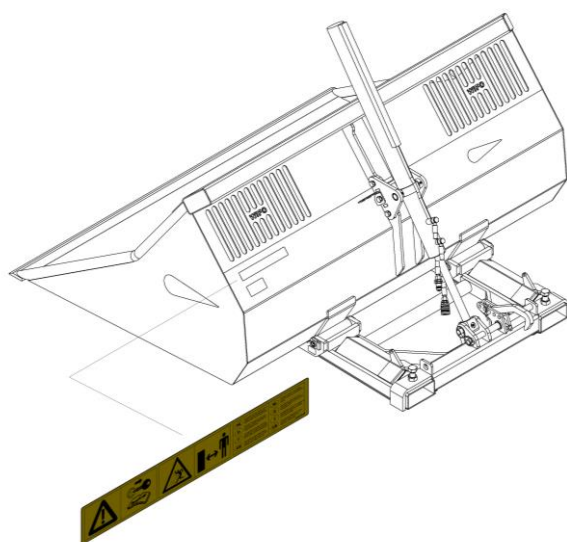


Figure 1.3.2-Location of safety decals for HOD

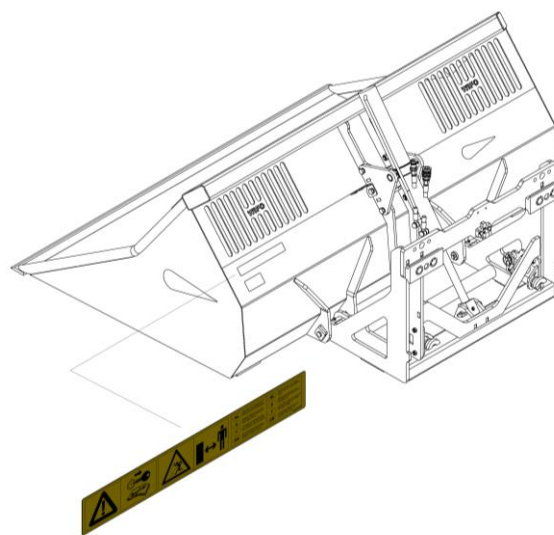


Figure 1.3.3-Location of safety decals for HOD-F

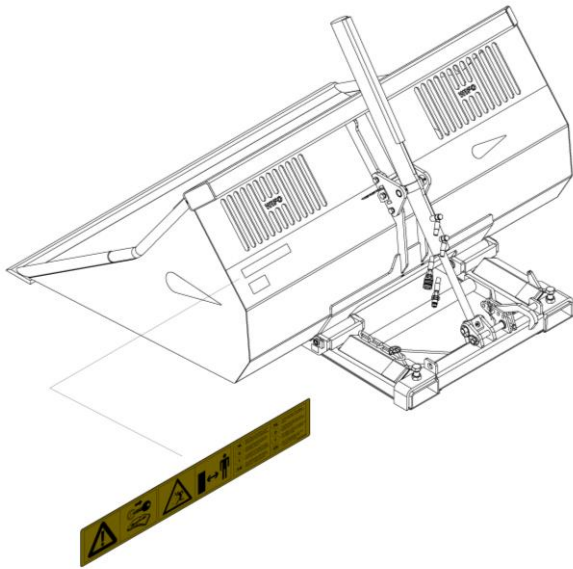


Figure 1.3.4-Location of safety decals for HOD-Z

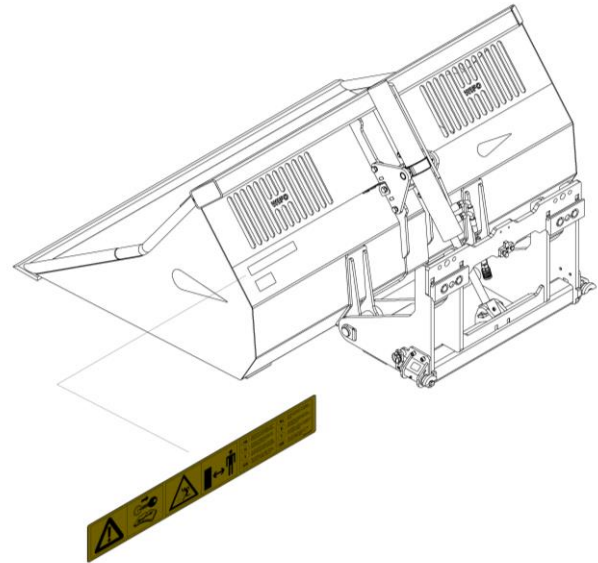


Figure 1.3.5-Location of safety decals for HOD-Z-F

1.4 Purpose of use

The WIFO Hydraulic loading bucket HOD-(F) and HOD-Z-(F) are especially suitable for scooping and transporting damage-sensitive products such as ware and seed potatoes, onions, flower bulbs, etc. due to special side plates, rounded sides and see-through grates.



CAUTION:


The capacity of the forklift or lifting mast must be greater than the total mass of the scooping bucket and load. The lift truck or lift mast must be equipped with at least one double-acting hydraulic connection on the fork carriage.

The hydraulic loading bucket must definitely not be used for passenger transport!

1.5 Liability

These instructions must be read by all persons working on and with this machine. Furthermore, they must only use the machine for its intended purpose. This includes the following points:

1. Work must only be carried out in accordance with the instructions and within the functional limits (e.g. max. hydraulic working pressure) as specified in the regulations. Sound and proper tools must be used.
2. Electrical / electronic equipment including accessories (e.g. cables) must be handled according to the general rules of use for non-watertight portable electrical and electronic equipment, that means among other things:
 - a) Store and keep in clean, dry environment and out of reach of rodents, etc.
 - b) Protect the equipment from hard, undamped shocks and from getting wet (rain).
3. Only original or equivalent replacement parts may be used which must be fitted according to the instructions (e.g. the specified tightening torques). A part (or lubricant) is considered equivalent if it has been expressly approved by WIFO or if you can prove that it has the required properties for the function(s) in question.
4. Always use lubricants that meet the specifications as described in the manual.
5. The locally applicable regulations regarding accident prevention, safety, traffic and transport must be observed at all times.
6. Only people who know the machine and are aware of possible dangers may work with and/or on the machine.
7. Changes to the machine that are not explicitly approved by WIFO exclude any liability of WIFO-Anema B.V. regarding possible damage.

	<p><i>Failure to comply with the rules and instructions in this manual shall be considered gross negligence, which cancels any liability of WIFO-Anema B.V. for all consequences arising therefrom. The risk then lies entirely and exclusively with the user.</i></p>
	<p><i>WIFO-Anema B.V. is constantly engaged in improving its products. It therefore reserves the right to make all changes and improvements it deems necessary. There is no obligation to apply these to previously delivered machines.</i></p>

1.6 Warranty

WIFO-Anema B.V. vouches for the soundness of the items it delivers with regard to material and/or construction faults. However, this warranty is limited in all cases to replacing or repairing the defective item or part thereof free of charge. WIFO-Anema B.V. cannot be held responsible for any damage or costs arising from faulty delivery and/or defective items supplied by us within the guarantee period. **The warranty period is one year.**

2. Technical data

2.1 General technical data

Type	HOD-150	HOD-175	HOD-200	HOD-225
Content	1100 L	1300 L	1500 L	1700 L
Weight	390 kg	410 kg	430 kg	450 kg
Center of gravity	900 mm	900 mm	900 mm	900 mm
Center of gravity combination ¹	990 mm	990 mm	990 mm	990 mm
Width	1500 mm	1750 mm	2000 mm	2250 mm
Depth	1550 mm	1550 mm	1550 mm	1550 mm
Height	850 mm	850 mm	850 mm	850 mm
Max. working pressure	18 MPa (180 bar)	18 MPa (180 bar)	18 MPa (180 bar)	18 MPa (180 bar)
Tilt angle ²	48°/38°	48°/38°	48°/38°	48°/38°

Table 2.1.1-Features of WIFO HOD hydraulic buckets

Type	HOD-150F	HOD-175F	HOD-200F	HOD-225F
Capacity	1100 L	1300 L	1500 L	1700 L
Weight	400 kg	420 kg	440 kg	480 kg
Center of gravity	800 mm	800 mm	800 mm	800 mm
Center of gravity combination ¹	960 mm	960 mm	960 mm	960 mm
Width	1500 mm	1750 mm	2000 mm	2250 mm
Depth	1550 mm	1550 mm	1550 mm	1550 mm
Height	850 mm	850 mm	850 mm	850 mm
Max. working pressure	18 MPa (180 bar)	18 MPa (180 bar)	18 MPa (180 bar)	18 MPa (180 bar)
Tilt angle ²	60°/38°	60°/38°	60°/38°	60°/38°

Table 2.1.2-Features of WIFO HOD-F hydraulic buckets

Type	HOD-Z-200	HOD-Z-225	HOD-Z-250	HOD-Z-275
Content	1500 L	1700 L	1900 L	2100 L
Weight	650 kg	675 kg	700 kg	725 kg
Center of gravity	900 mm	900 mm	900 mm	900 mm
Center of gravity combination ¹	990 mm	990 mm	990 mm	990 mm
Width	2000 mm	2250 mm	2500 mm	2750 mm
Depth	1550 mm	1550 mm	1550 mm	1550 mm
Height	850 mm	850 mm	850 mm	850 mm
Max. working pressure	18 MPa (180 bar)	18 MPa (180 bar)	18 MPa (180 bar)	18 MPa (180 bar)
Tipping angle ²	48°/39°	48°/39°	48°/39°	48°/39°

Table 2.1.3-Features of WIFO HOD-Z hydraulic buckets

Type	HOD-Z-200F	HOD-Z-225F	HOD-Z-250F	HOD-Z-275F
Capacity	1500 L	1700 L	1900 L	2100 L
Weight	750 kg	795kg	925kg	970kg
Center of gravity	800 mm	800 mm	800 mm	800 mm
Center of gravity combination ¹	1000 mm	1000 mm	1000 mm	1000 mm
Width	2000 mm	2250 mm	2500 mm	2750 mm
Depth	1550 mm	1550 mm	1550 mm	1550 mm
Height	850 mm	850 mm	850 mm	850 mm
Max. working pressure	18 MPa (180 bar)	18 MPa (180 bar)	18 MPa (180 bar)	18 MPa (180 bar)
Tipping angle ²	76°/32°	76°/32°	76°/32°	76°/32°

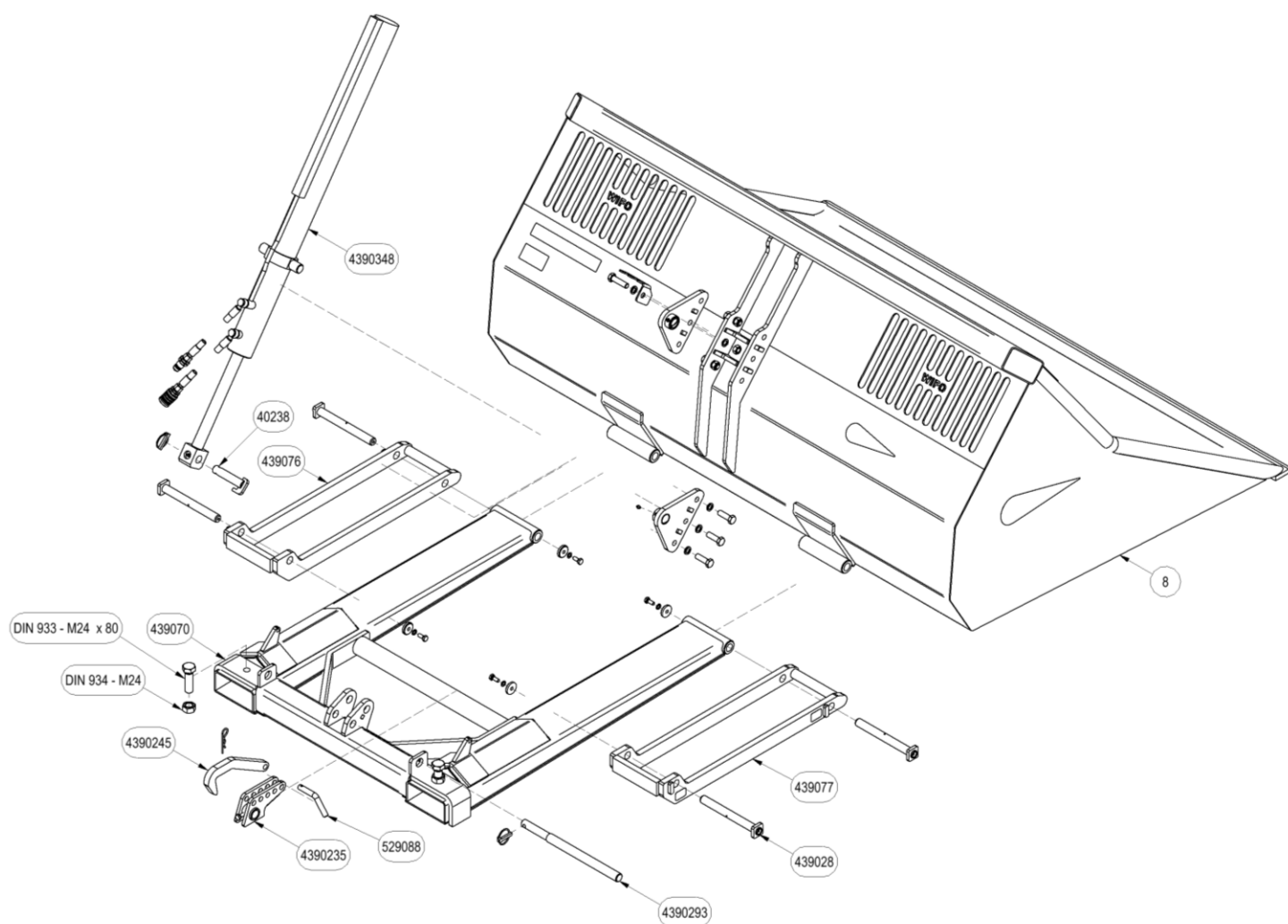
Table 2.1.4-Features of WIFO HOD-Z-F hydraulic buckets

¹Point from which the residual capacity of the forklift is calculated including the load.

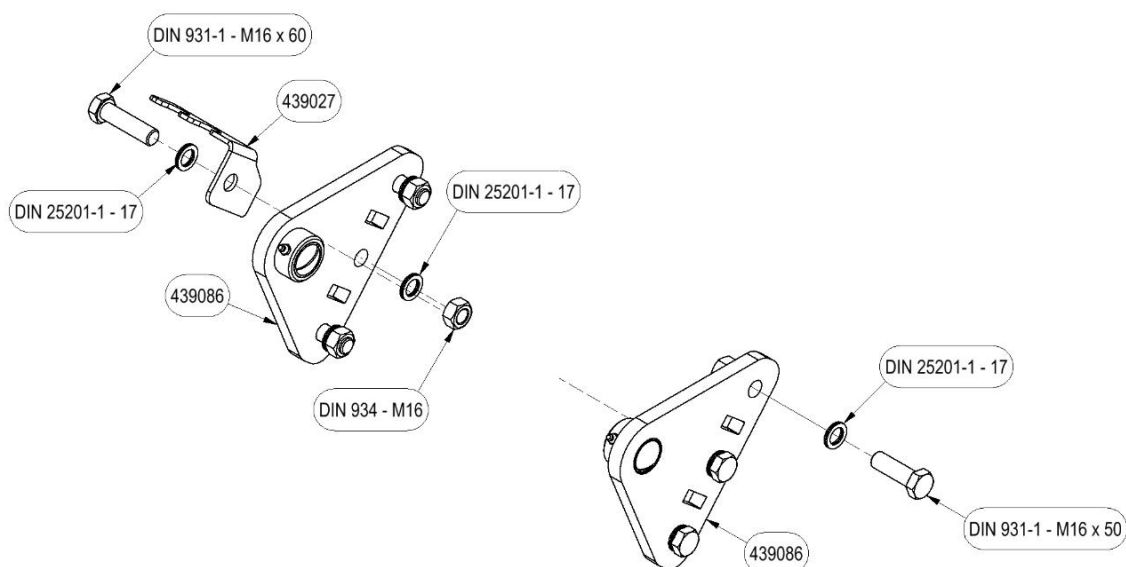
²Forward tilt/backward tilt angle.

2.2 HOD

2.2.1 Parts list



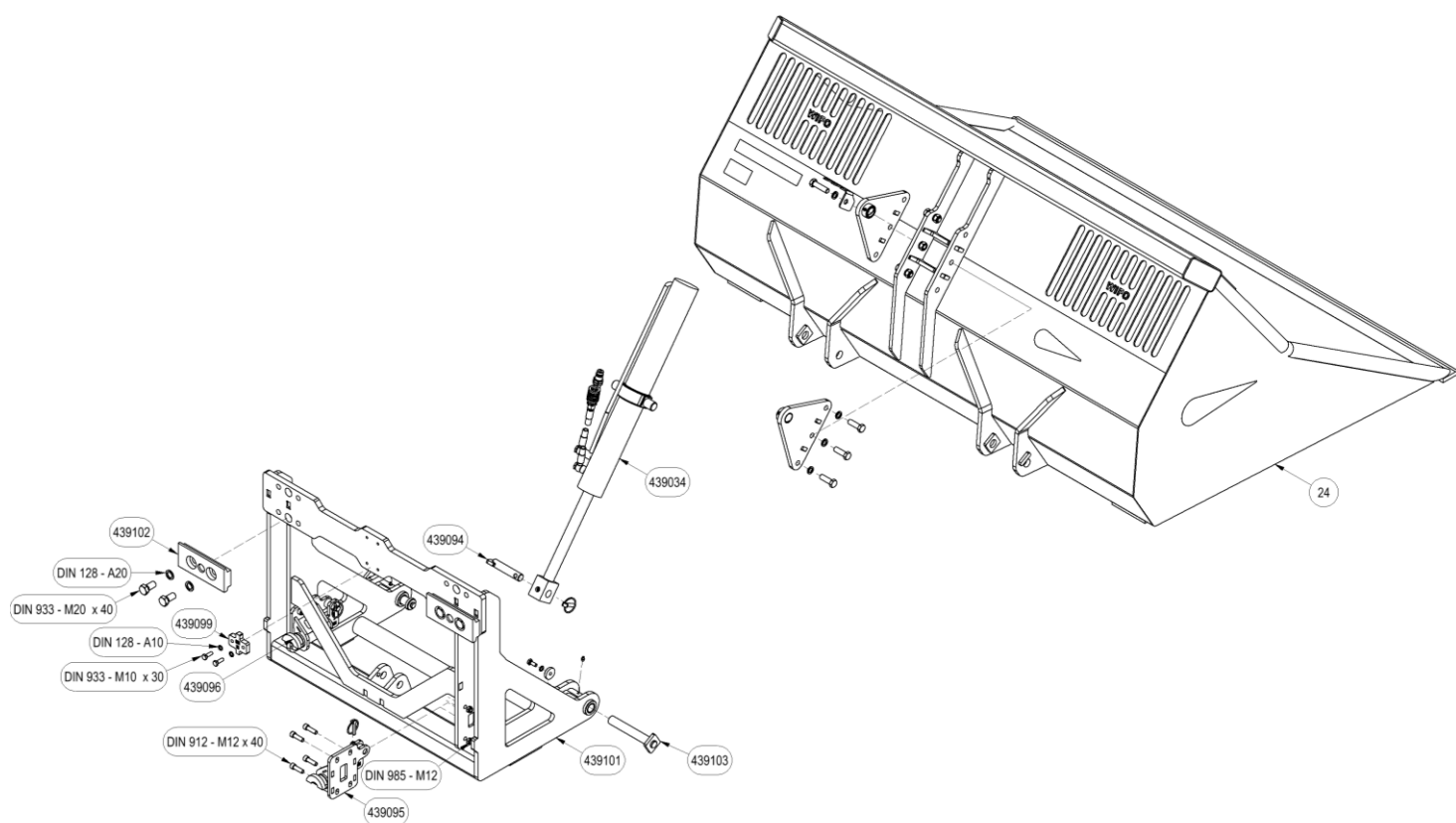
Description	Spare part number
Securing hook HO-HOD	4390245
DW 70-35-1000 Block	4390348
Cylinder pin	439094
Pin Securing hook 1 cylinder	4390293
Securing hook holder	4390235
Strip hinge HO-HOD Right	439077
Strip hinge HO-HOD Left	439076
Bucket HOD	8
• Bucket HOD-150	4390615
• Bucket HOD-175	4390625
• Bucket HOD-200	4390635
• Bucket HOD-225	4390645
Frame HO-HOD	439070
Pen support leg M&S	529088
Swivel pin Ø25 HO-HOD	439028



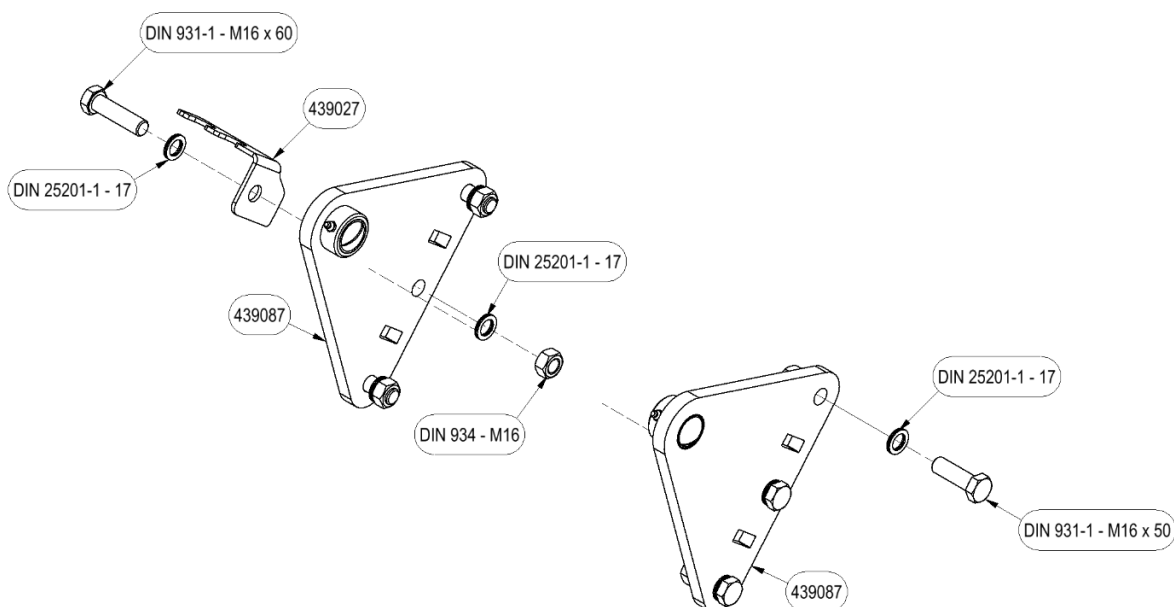
Description	Spare part number
Hose clip HOD	439027
Cylinder plate HOD-(Z) R (set)	439086
Cylinder plate HOD-(Z) L (set)	439086

2.3 HOD-F

2.3.1 Parts list



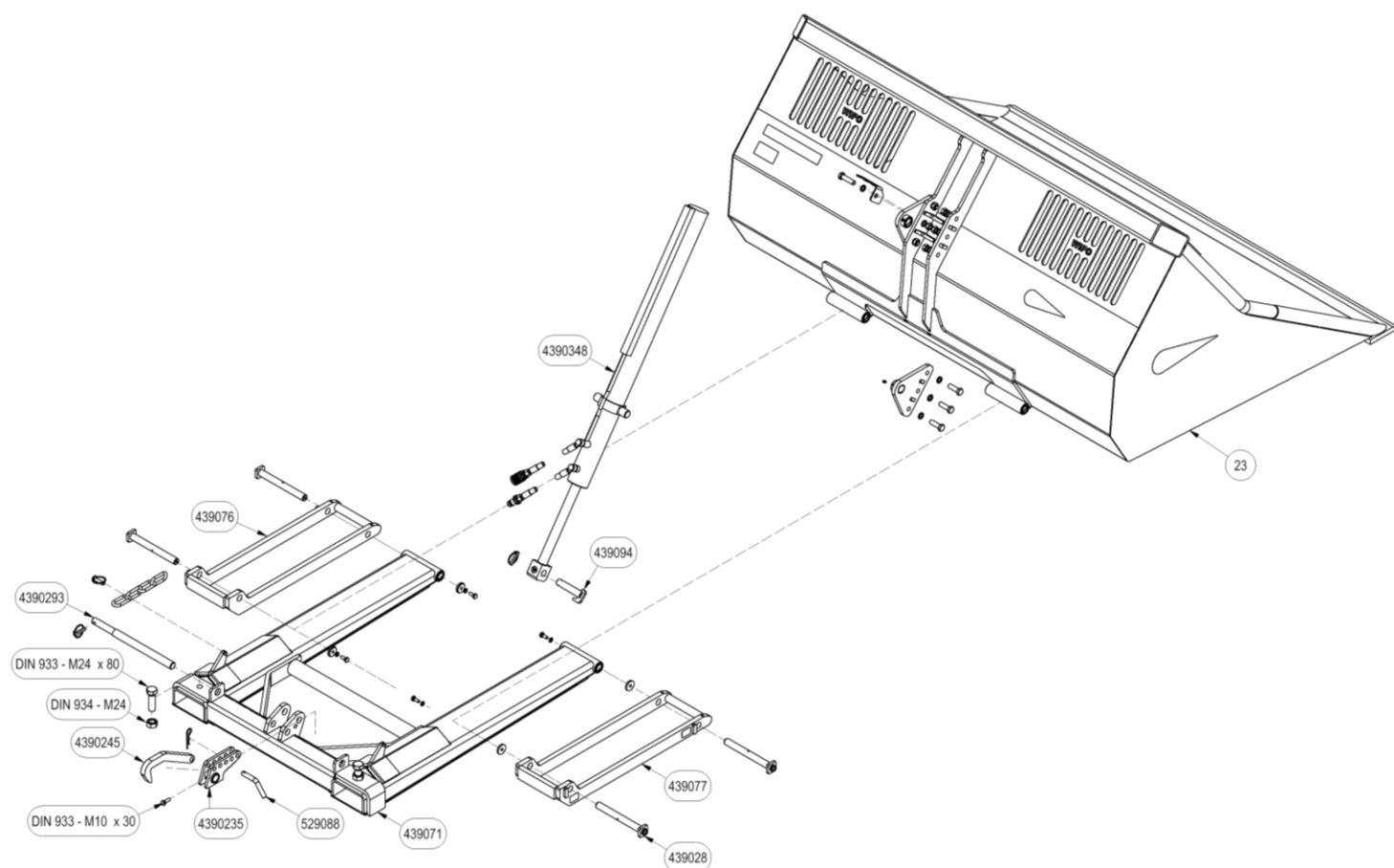
Description	Spare part number
Locking strip FEM II - III	439099
DW 70-35-600 right	439034
Cylinder pin	439094
Suspension block Buck Fem II-III NM	439102
Rotating pin HO(D) FEM	439103
Frame FEM II - III HO(D)	439101
Screwable quick coupler FEM II-III R	439096
Screwable quick coupler FEM II-III L	439095
Bucket HOD FEM	24
• Bucket HOD-150F	439104
• Bucket HOD-175F	439105
• Bucket HOD-200F	439106
• Bucket HOD-225F	439107



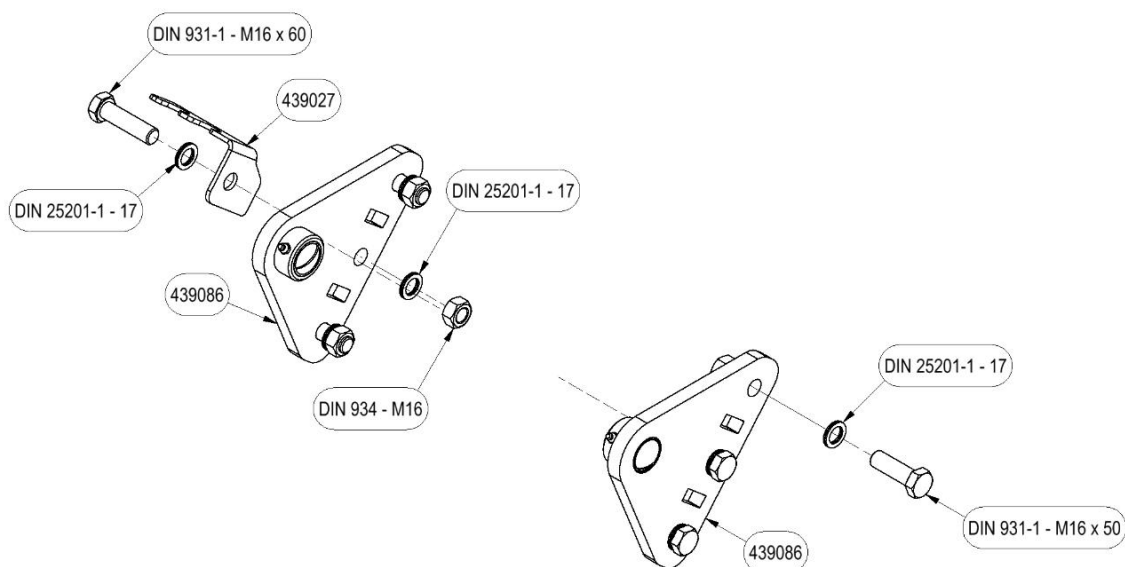
Description	Spare part number
Hose clip HOD	439027
Cylinder plate HOD-(Z)-F (set)	439086
Cylinder plate HOD-(Z)-F (set)	439086

2.4 HOD-Z

2.4.1 Parts list



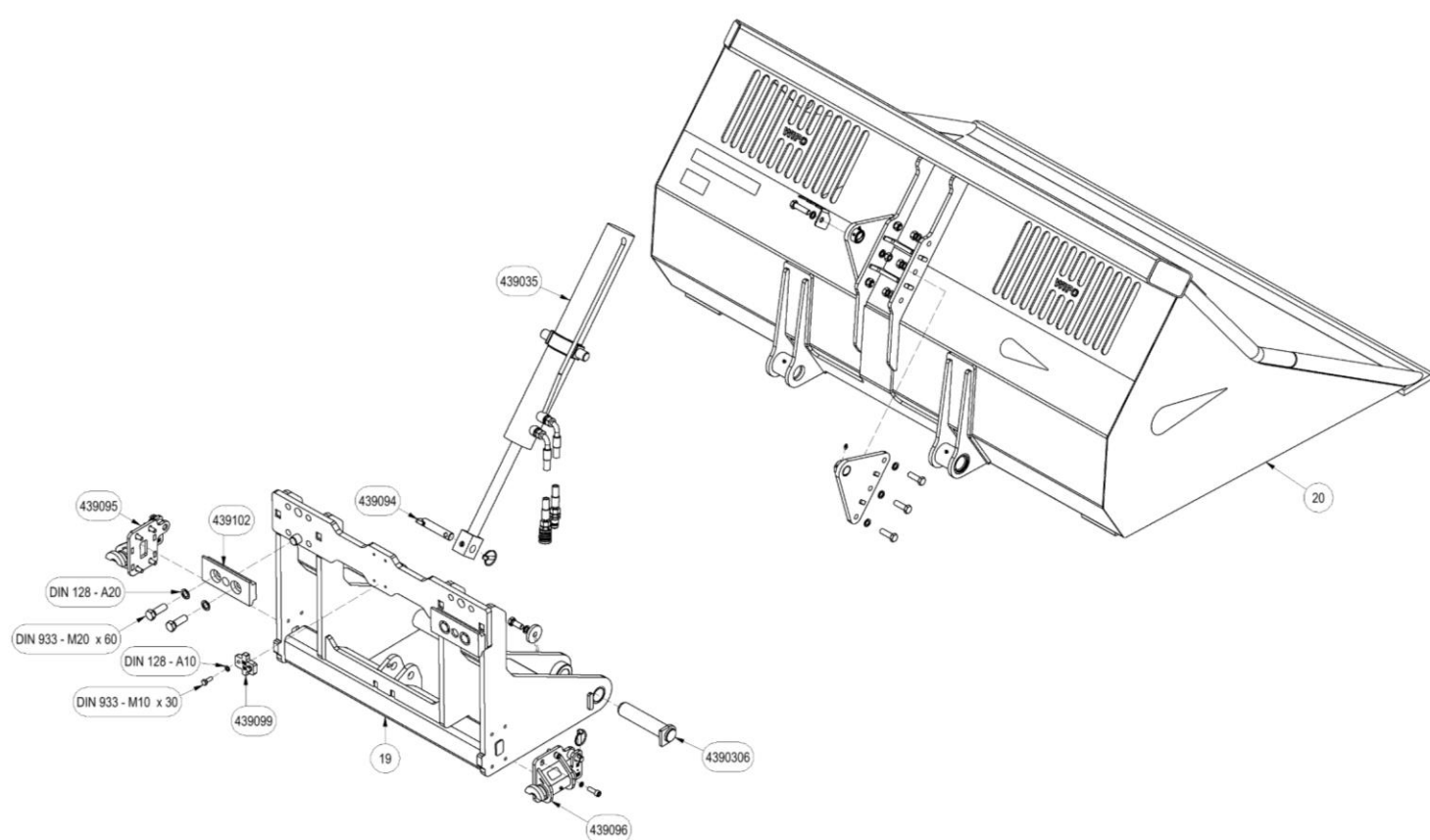
Description	Spare part number
Securing hook HO-HOD	4390245
DW 70-35-1000 Block	4390348
Cylinder pin	439094
Pin Securing hook 1 cyl.	4390293
Securing hook holder	4390235
Strip hinge HO-HOD Right	439077
Strip hinge HO-HOD Left	439076
Bucket HOD-Z	23
• Bucket HOD-Z-200	-
• Bucket HOD-Z-200	-
• Bucket HOD-Z-200	-
• Bucket HOD-Z-200	-
Frame HOD-Z-200-225 N.M	439071
Pen support leg M&S	529088
Swivel pin Ø25 HO-HOD	439028



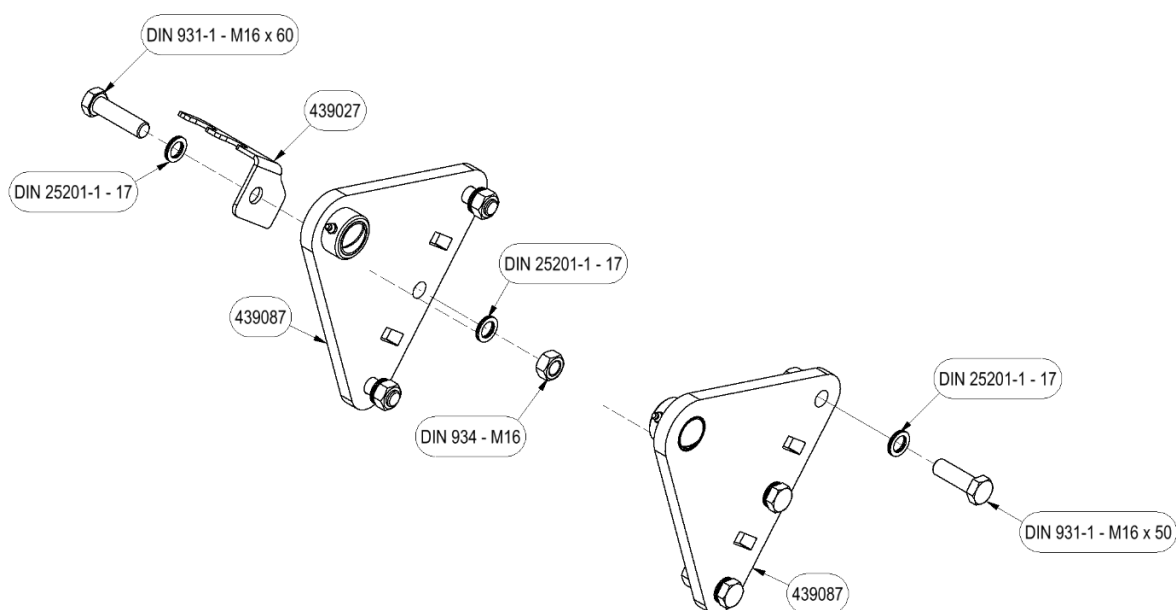
Description	Spare part number
Hose clip HOD	439027
Cylinder plate HOD-(Z) R (set)	439086
Cylinder plate HOD-(Z) L (set)	439086

2.5 HOD-Z-F (1 cylinder)

2.5.1 Parts list



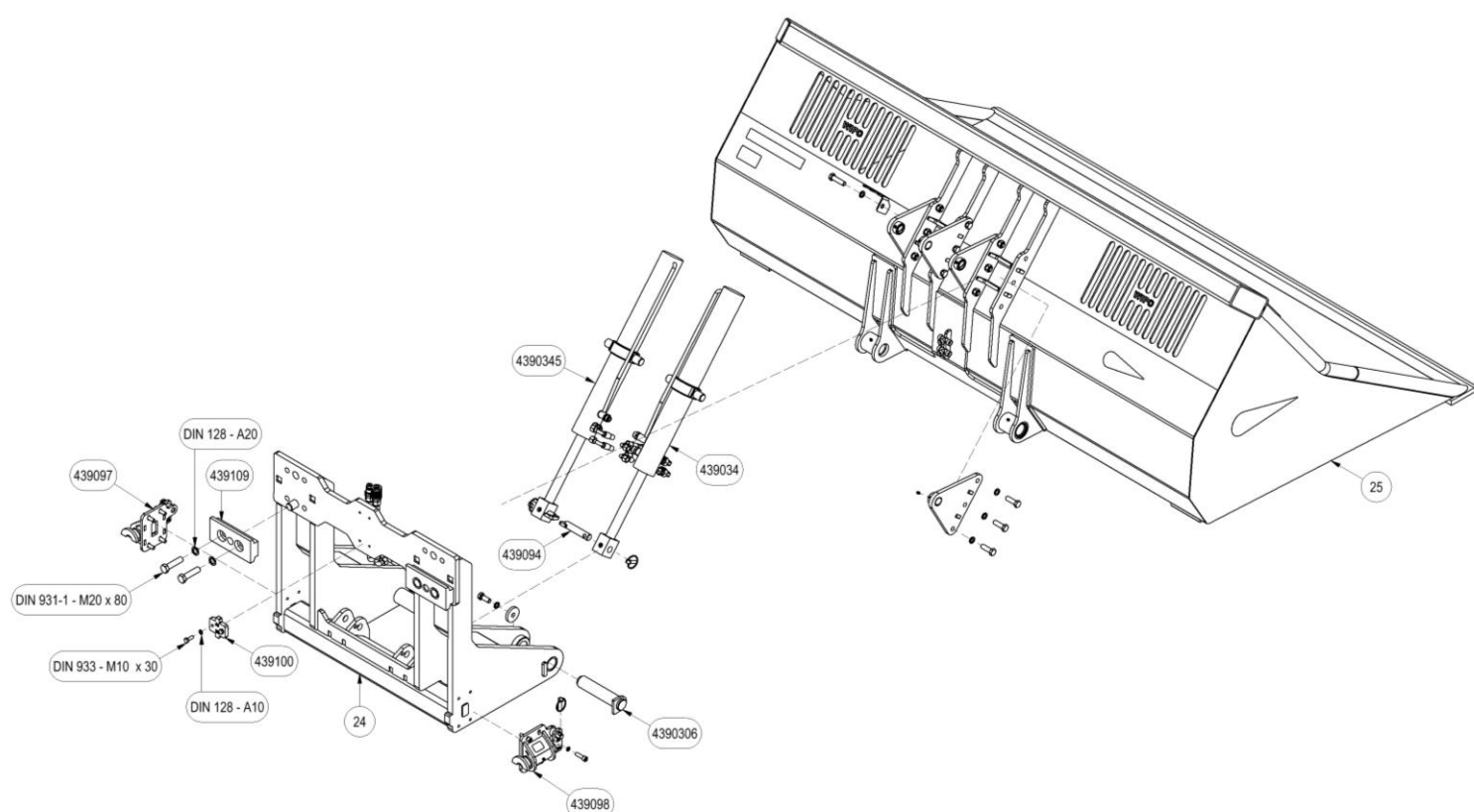
Description	Spare part number
Locking strip FEM II - III	439099
Cylinder DW 80-35-600	439035
Cylinder pin	439094
Suspension block Buck Fem II-III NM	439102
Turning pin buck FEM II-III III-IV	4390306
Frame FEM II - III HOD-Z-F, Z(IF)	19
Bucket HOD-Z-F	20
• Bucket HOD-Z-200F	-
• Bucket HOD-Z-225F	-
Screwable quick coupler FEM II-III R	439096
Screwable quick coupler FEM II-III L	439095



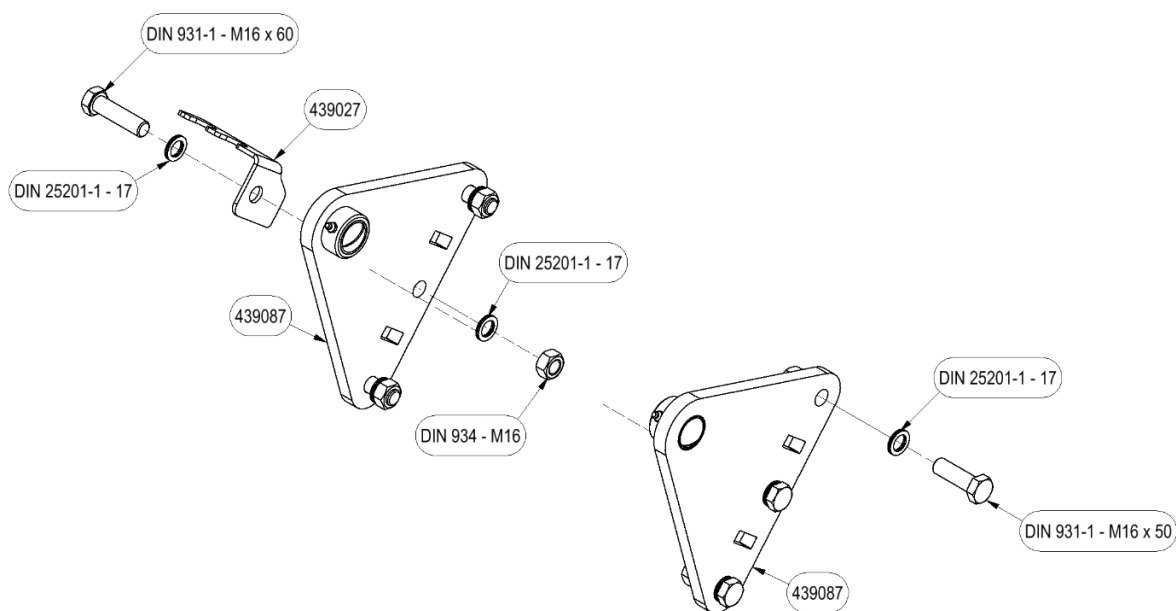
Description	Spare part number
Hose clip HOD	439027
Cylinder plate HOD-(Z)-F (set)	439086
Cylinder plate HOD-(Z)-F (set)	439086

2.6 HOD-Z-F (2 cylinders)

2.6.1 Parts list



Description	Spare part number
Locking strip FEM III - IV buck	439100
DW 70-35-600 right	439034
DW 70-35-600 left	4390345
Cylinder pin	439094
Suspension block Buck Fem III-IV NM	439109
Turning pin buck FEM II-III III-IV	4390306
Frame HO-ZIF 200-275 FEM 3-4	24
Bucket HOD-Z-F	25
• Bucket HOD-Z-250F	-
• Bucket HOD-Z-275F	-
Screwable quick coupler FEM III-IV R	439098
Screwable quick coupler FEM III-IV L	439097



Description	Spare part number
Hose clip HOD	439027
Cylinder plate HOD-(Z)-F (set)	439086
Cylinder plate HOD-(Z)-F (set)	439086

2.6.2 Commissioning a hydraulic loading bucket on forks

1. Set the forks of the forklift/lifting mast at the correct distance (center to center 830 mm), such that the Hydraulic loading bucket is centered in front of the forklift/lifting mast.
2. Drive the forklift/truck with the forks as far as possible into the fork holders of the scoop bucket.
3. Lock the buck to the fork carriage of the forklift/lifting mast with the locking hook or chain to prevent the scoop bucket from sliding off the forks.
4. When the scoop bucket is slightly raised, tighten the bolts to the point where they just barely touch the forks of the forklift or lift mast. Secure these bolts with the locknuts.
5. Connect the hydraulic hoses and make sure that the quick connectors are thoroughly clean so that no debris enters the machine's hydraulic system.
6. Next, check that the hydraulic hoses move freely along everything and check that the system is not leaking oil.
7. Check the operation of the scoop bucket by operating the hydraulic functions.

2.6.3 Commissioning of a hydraulic loading bucket on fork carrier

1. Remove the forks from the forklift or lift mast.
2. Make sure the fork board is straight and clean.
3. Place the scoop bucket on the fork carriage of the forklift or lift mast.
4. Make sure that the locking cam falls into the recess in the center of the fork carriage. If this recess is missing:
 - a) Should this recess be cut in, or
 - b) Should the blocking cam of the scoop bucket be ground away and a proper blocking cam be installed in place of an existing recess in the fork carriage. This in such a way that the scoop bucket is centered in front of the fork carriage and cannot slide sideways.
5. Lock the bucket to the forkboard by turning the locking levers half a turn so that the fork carrier shaped half-discs clamp behind the forkboard. Secure the levers with the locking spring.
6. Connect the hydraulic hoses and make sure that the quick connectors are thoroughly clean so that no debris enters the machine's hydraulic system.
7. Next, check that the hydraulic hoses move freely along everything and check that the system is not leaking oil.

Check the operation of the scoop bucket by operating the hydraulic functions


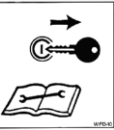
The WIFO hydraulic bucket is now ready for use.

3. Maintenance and malfunctions

This manual contains the necessary safety instructions for maintenance work on the machine. Compliance with these instructions is mandatory to ensure the safety of personnel and to keep the machine in optimal condition.

3.1 General safety regulations

It is mandatory to wear personal protective equipment (PPE) when performing maintenance work on the machine. This is to protect against potential hazards such as mechanical hazards, sharp edges, hot surfaces and harmful substances.

 	<p><u>Attention:</u> <i>Read the instructions in the manual carefully before servicing the machine!</i> <i>Stop the engine and remove the key from the ignition as long as the machine is worked!</i></p>
---	--

3.2 Required Personal Protective Equipment (PPE).

Maintenance personnel should wear at least the following PPE:

- **Safety glasses** - To protect against dust, sparks or flying particles.
- **Gloves** - Suitable for the specific job (cut-resistant, heat-resistant or chemical-resistant gloves, depending on the task).
- **Safety shoes** - With steel or composite toe cap and non-slip sole.
- **Hearing protection** - If work takes place in a noisy environment (>80 DB(A)).

3.3 Specific Safety Measures

- Make sure the hydraulic bucket is in the lowest position and it is level on the ground when any maintenance or repair of the scoop bucket takes place.
- Prevent inadvertent tipping and/or lifting of the hydraulic bucket during maintenance operations by turning off the lift truck or tractor engine and removing the ignition key from the ignition switch.
- Additional measures can be taken by disconnecting the hydraulic hoses.
- Prevent unauthorized persons from entering the work zone.
- Use proper tools and follow the manufacturer's instructions.
- After maintenance, the machine should be checked for proper operation before being put back into service.

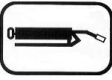
3.4 Compliance and responsibility


- Failure to comply with these PPE requirements may result in serious injury or injury.
- Employers and employees are jointly responsible for properly wearing PPE.
- Check PPE regularly for good condition and replace as needed.


3.5 Preventive maintenance and lubrication

After the first 8 hours of operation:

- Check connections and glands of the hydraulic lines.
- Retighten all bolts.

	<p><i>This sticker indicates the position of a grease nipple on the machine. Lubrication should be done after every 10 hours of operation of the machine. The best lubricants are SAE 30 oil and Grade 2 greases based on Lithium.</i></p>
---	--

	<p><i>Check the hydraulic section regularly for leaks. Never try to find or even plug a leak by hand. High-pressure fluid easily sprays through skin and clothing and causes severe injuries. If hydraulic hoses are damaged, they should be replaced to prevent hose rupture and resulting accidents.</i></p>
	<p><i>Check the oil level of your lift truck/tractor's hydraulic system regularly!</i></p>

	<p><i>If other problems arise, it is best to contact your dealer. They will be happy to assist you.</i></p>
---	---

3.6 Work to be performed by a skilled mechanic

3.6.1 Instructions for replacing the blade and/or slice strips

Take adequate safety precautions for grinding and welding operations (fire hazards, personal protection, etc.)

1. Disconnect all hydraulic hoses.
2. Use suitable lifting equipment and place the Bucket on a firm and level surface, such that the blade and wear strips are easily accessible. Avoid damaging the cylinder and adequately support the Bucket.
3. Grind off the old blade and/or wear strips and remove the welds from the Bucket.

Blade:

4. Place the new blade straight and flush under the Bucket.
 - a) The sharp edge of the blade should (the machine seen in the position when scooping) point forward and be at the bottom.
 - b) The overlap of the blade and Bucket is 40mm for an 80mmx15mm manganese blade and 75mm for a 150mmx20mm boron blade. (See Figure 3.3.1)
5. Weld the top of the blade along its entire length (A-height = 4).
6. Weld the back of the blade with weld lengths of 100mm (A-height = 5) and spacing of 150mm.

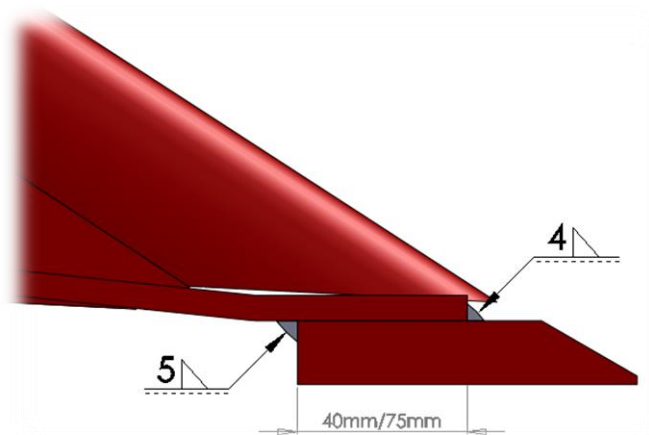


Figure 3.6.1-Overlap blade serving Hydraulic loading buckets

Wear strips:

7. Place the new wear strips straight and flush under the Bucket.
 - a) The sharp edge of the blade should (the machine seen in the position when scooping) point forward and be at the top.
 - b) Place the wear strips 50mm apart, measured from the side of the Bucket.
8. Weld the wear strip all around (A-height = 6).

EC DECLARATION OF CONFORMITY

(In accordance with the Machinery Directive 2006/42/EC, Annex II, A)

Name: **WIFO-Anema BV**

Address: **Hegebeintumerdyk 37, 9172GP, Ferwert, Netherlands**

Phone: **+31 (0)518411318**

E-mail: **info@wifo.nl**

Declares that the following machine complies with the relevant directives:

Typeplaatje WIFO

Machine description:

The **WIFO HOD-(Z)** hydraulic loading bucket is an interchangeable attachment that can be mounted on the forks of the forklift as standard. The **WIFO HOD-(Z)-F** hydraulic bucket is an interchangeable attachment that can be mounted as standard on an ISO 2328 standardized fork carriage. Both types are suitable for picking up and transporting loosely dumped damage-sensitive products such as potatoes, onions, carrots, etc.

Applied European Directives:

- Machinery Directive 2006/42/EC

Applied harmonized standards:

- EN ISO 12100:2010 - General safety principles.

Name: **Wytze Anema**

Function: **Director**

A handwritten signature in black ink, appearing to be 'Wytze Anema', with a long horizontal stroke extending to the right.

Location: **Ferwert**

Date: **01-01-2025**