

# Bulk bucket

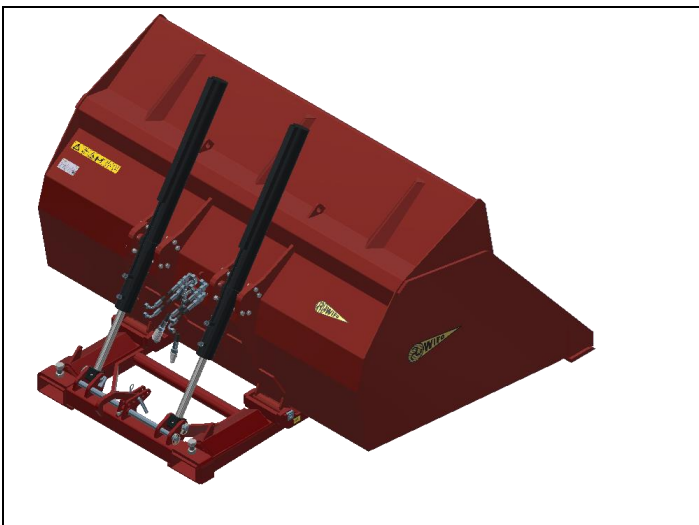
HO/HO-F/HO-ZI/HO-ZIF



HO



HO-F



HO-ZI



HO-ZIF





## *Englisch*

### Table of contents

|           |  |           |
|-----------|--|-----------|
| <b>1.</b> | <b>To the user .....</b>                                       | <b>4</b>  |
| 1.1       | Introduction.....  | 4         |
| 1.2       | Language and translations.....                                 | 4         |
| 1.3       | Safety instructions and warnings .....                         | 5         |
| 1.3.1     | Safety regulations .....                                       | 5         |
| 1.3.2     | Safety stickers and warning images.....                        | 8         |
| 1.3.3     | Location of safety stickers on the machine .....               | 8         |
| 1.4       | Purpose of use .....   | 9         |
| 1.5       | Liability.....   | 10        |
| 1.6       | Warranty.....  | 10        |
| <b>2.</b> | <b>Technical data .....</b>                                    | <b>10</b> |
| 2.1       | General technical data.....                                    | 10        |
| 2.2       | HO .....   | 11        |
| 2.2.1     | Parts list.....  | 12        |
| 2.3       | HO-F.....  | 14        |
| 2.3.1     | Parts list.....  | 14        |
| 2.4       | HO-ZI.....   | 16        |
| 2.4.1     | Parts list.....  | 16        |
| 2.5       | HO-ZIF .....   | 18        |
| 2.5.1     | Parts list.....  | 18        |
| 2.5.2     | Commissioning of a hydraulic bucket on forks .....             | 20        |
| 2.5.3     | Commissioning of a hydraulic bulk bucket on fork carriage..... | 20        |
| <b>3.</b> | <b>Maintenance and faults .....</b>                            | <b>21</b> |
| 3.1       | General safety regulations.....                                | 21        |
| 3.2       | Required Personal Protective Equipment (PPE) .....             | 21        |
| 3.3       | Specific safety measures .....                                 | 21        |
| 3.4       | Compliance and accountability .....                            | 22        |
| 3.5       | Preventive maintenance and lubrication .....                   | 22        |
| 3.6       | Work to be carried out by a skilled mechanic .....             | 23        |
| 3.6.1     | Instructions for replacing blade and/or slice strips .....     | 23        |

## 1. To the user

### 1.1 Introduction

The purpose of this manual is to inform you about the commissioning, operation and maintenance of your new WIFO hydraulic bulk lifting bucket. In addition, this manual contains safety instructions, which ensure hazard-free application.

WIFO-Anema B.V. constantly strives to improve its products. WIFO-Anema B.V. reserves the right to make any changes and improvements it deems necessary.

Before commissioning, read and observe the manual and safety instructions thoroughly. If any questions remain open after reading the manual, it is best to contact your dealer.

We wish you much working pleasure with your WIFO hydraulic bulk bucket.



**CAUTION:**

*Read this manual carefully before commissioning the machine and follow all instructions. This is to ensure safe, trouble-free operation.*

Keep this manual carefully for future use!

WIFO-Anema B.V.


**Dealer:**


### 1.2 Language and translations

This manual is a translation of the original Dutch version. In case of discrepancies between translations and the Dutch version, the Dutch text prevails.

### 1.3 Safety regulations and warnings

Please read this manual before using the machine for the first time and absolutely observe the safety instructions. Particularly important places are marked with a pictogram.

|   |   |
|---|---|
|  | <p><i>You will find this sign at all important safety instructions in this manual. Observe the instructions carefully and behave particularly carefully in these cases.</i></p> |
|---|---|

|   |   |
|---|---|
|  | <p><i>You will find this sign at all important safety instructions in this manual. Follow the instructions carefully and act with particular caution in such cases.</i></p> |
|---|---|

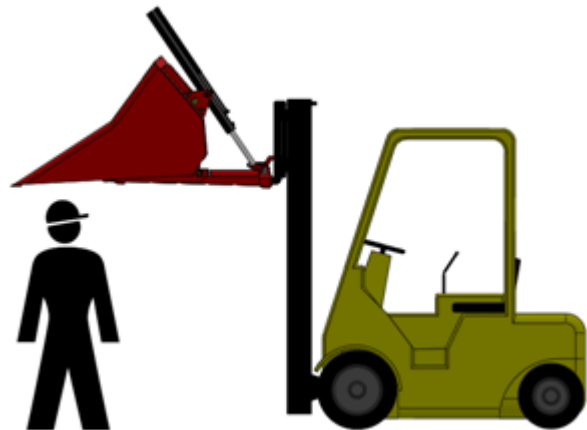
All persons entrusted with the commissioning, operation and maintenance of the machine must carefully read and observe the following instructions.

#### 1.3.1 Safety regulations

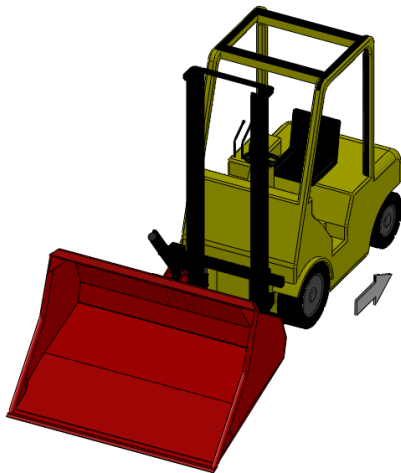
The following safety regulations apply to every type of WIFO hydraulic bulk bucket. No distinction is made here for the lifting vehicle used.



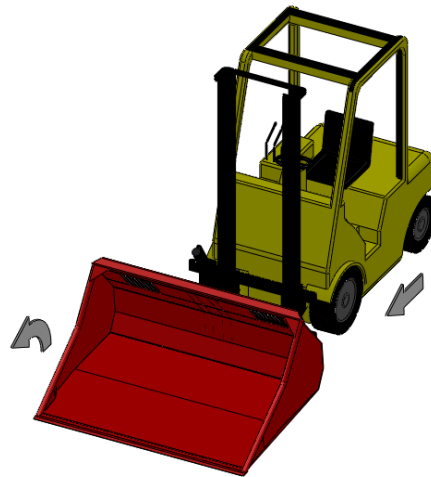
***Do not let anyone ride with you.***



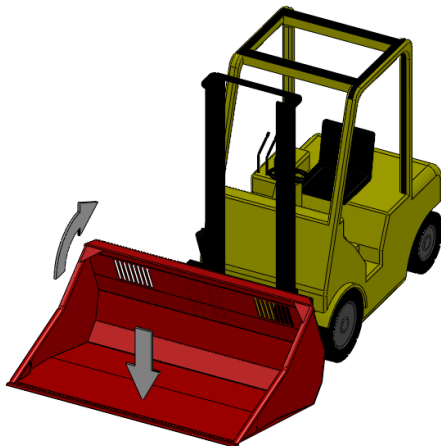
***Never stand under the scooping bucket and beware of products falling out of the bucket.***



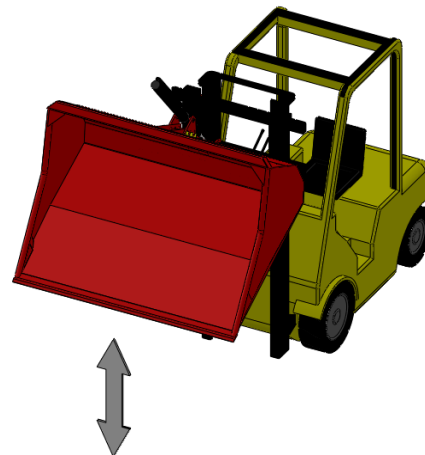
**To prevent damage to the cylinder, do not drive backwards (forklift truck) or forwards (tractor with lift mast) when the bucket is tipped and the blade of the bucket is resting on the ground.**



**When scooping cargo, ensure that the scooping bucket is horizontal or slightly forward (max. 15°). Make sure that the blade does not go under or behind a ledge to prevent damage.**



**When transporting, tilt the scoop bucket backwards to prevent the load from falling off. Transport load with the scoop bucket as low as possible to keep the transporting implement as stable as possible.**



**When unloading the brag bucket, ensure that there is sufficient distance between the brag bucket and the surface to prevent unnecessary damage to the brag bucket.**



***Operate the bag bucket only from the operator's seat of the lifting equipment. Ensure that there is always sufficient visibility of the work from this position.***

***Distribute the load as evenly as possible across the width of the scoop bucket. Keep the centre of gravity of the load as close to the fork carriage as possible. Load the scoop bucket in such a way that the load cannot fall off unexpectedly.***

***Ensure that the tilt control lever cannot be confused with other control levers to prevent unintended operation.***


***Ensure that the hydraulic hoses cannot become trapped and the scoop bucket with the cylinder (at its highest point) can rotate freely.***

***Ensure that everyone stays sufficiently out of the working area of the scoop bucket at all times.***

***Always keep sufficient pressure on all implement wheels to keep the combination stable and steerable; therefore take into account shifting the centre of gravity during tilting of the bucket and take particular care when working in rough terrain and on slopes. Use counterweights and/or twin wheels if necessary.***

***Only put the forklift/lift truck away with the scoop bucket in the lowest position with the scoop bucket flat on the ground. Make sure that the combination cannot make unexpected movements when the forklift/tractor is not in use. If necessary, disconnect the hydraulic hoses.***

### 1.3.2 Safety stickers and warning images

|   |  |
|---|--|
|  | <p><b>Working safely also means being well informed about the various safety stickers on the machine. You must be well aware of what they are warning you about.</b></p> <p><b>Stickers that are loose, illegible or off the machine should be replaced.</b></p> |
|---|--|

There are a number of safety stickers on the machine. The stickers used on this machine have the following meanings:




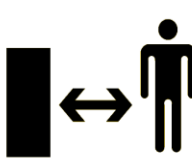
|   |   |   |   |   |           |  |          |   |          |   |           |  |   |           |   |          |   |          |  |           |  |
|---|---|---|---|---|-----------|--|----------|---|----------|---|-----------|--|---|-----------|---|----------|---|----------|--|-----------|--|
|  |                |  |  | <table border="0"> <tr> <td><b>NL</b></td> <td>Het totaal van de massa van de machine en de lading mag de hefcapaciteit niet overschrijden.</td> </tr> <tr> <td><b>D</b></td> <td>Gewicht Anbaugerät und Last zusammen, darf Tragfähigkeit nicht überschreiten.</td> </tr> <tr> <td><b>F</b></td> <td>La capacité de levage doit être supérieure au total de la masse de la machine et du chargement.</td> </tr> <tr> <td><b>GB</b></td> <td>The weight of the attachment together with the load may not exceed the lifting capacity.</td> </tr> </table> | <b>NL</b> | Het totaal van de massa van de machine en de lading mag de hefcapaciteit niet overschrijden. | <b>D</b> | Gewicht Anbaugerät und Last zusammen, darf Tragfähigkeit nicht überschreiten. | <b>F</b> | La capacité de levage doit être supérieure au total de la masse de la machine et du chargement. | <b>GB</b> | The weight of the attachment together with the load may not exceed the lifting capacity. | <table border="0"> <tr> <td><b>NL</b></td> <td>Zet de machine in de laagste stand indien deze niet gebruikt wordt.</td> </tr> <tr> <td><b>D</b></td> <td>Die Maschine muß sich in der untersten Position befinden bei Nichtgebrauch.</td> </tr> <tr> <td><b>F</b></td> <td>La machine soit sur la position la plus basse lorsque la machine n'est pas utilisée.</td> </tr> <tr> <td><b>GB</b></td> <td>The machine should be in the lowest position when the machine is not used.</td> </tr> </table> | <b>NL</b> | Zet de machine in de laagste stand indien deze niet gebruikt wordt. | <b>D</b> | Die Maschine muß sich in der untersten Position befinden bei Nichtgebrauch. | <b>F</b> | La machine soit sur la position la plus basse lorsque la machine n'est pas utilisée. | <b>GB</b> | The machine should be in the lowest position when the machine is not used. |
| <b>NL</b>   | Het totaal van de massa van de machine en de lading mag de hefcapaciteit niet overschrijden.    |   |   |   |           |  |          |   |          |   |           |  |   |           |   |          |   |          |  |           |  |
| <b>D</b>  | Gewicht Anbaugerät und Last zusammen, darf Tragfähigkeit nicht überschreiten.                   |   |   |   |           |  |          |   |          |   |           |  |   |           |   |          |   |          |  |           |  |
| <b>F</b>  | La capacité de levage doit être supérieure au total de la masse de la machine et du chargement. |   |   |   |           |  |          |   |          |   |           |  |   |           |   |          |   |          |  |           |  |
| <b>GB</b>   | The weight of the attachment together with the load may not exceed the lifting capacity.        |   |   |   |           |  |          |   |          |   |           |  |   |           |   |          |   |          |  |           |  |
| <b>NL</b>   | Zet de machine in de laagste stand indien deze niet gebruikt wordt.                             |   |   |   |           |  |          |   |          |   |           |  |   |           |   |          |   |          |  |           |  |
| <b>D</b>  | Die Maschine muß sich in der untersten Position befinden bei Nichtgebrauch.                     |   |   |   |           |  |          |   |          |   |           |  |   |           |   |          |   |          |  |           |  |
| <b>F</b>  | La machine soit sur la position la plus basse lorsque la machine n'est pas utilisée.            |   |   |   |           |  |          |   |          |   |           |  |   |           |   |          |   |          |  |           |  |
| <b>GB</b>   | The machine should be in the lowest position when the machine is not used.                      |   |   |   |           |  |          |   |          |   |           |  |   |           |   |          |   |          |  |           |  |

Figure 1.3.1. Safety sticker WIFO

### 1.3.3 Location of safety stickers on the machine

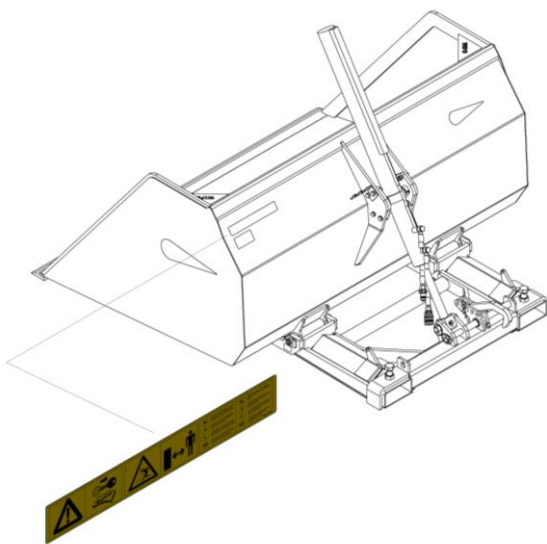


Figure 1.3.2-Place of safety decals for HO

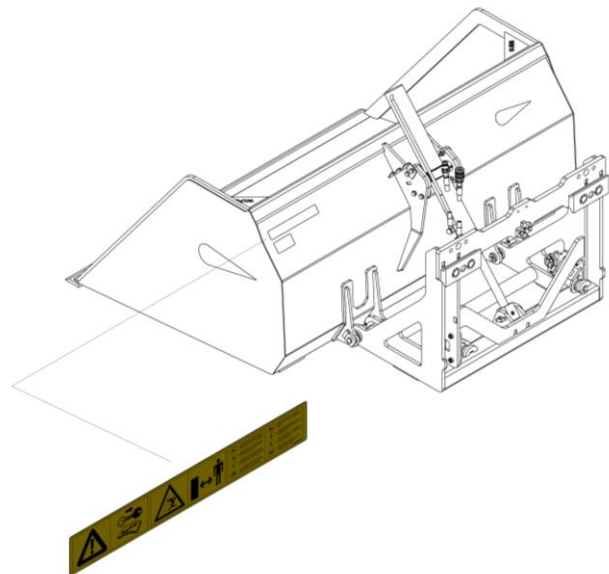


Figure 1.3.3-Location of safety decals for HO-F

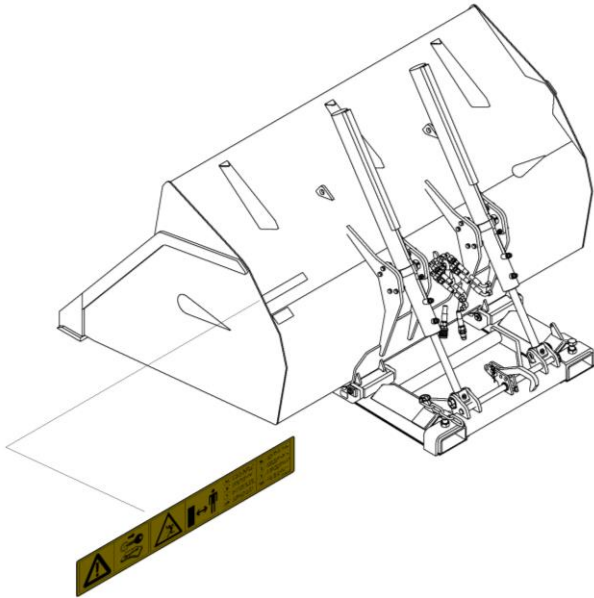


Figure 1.3.4-Location of safety decals for HO-ZI

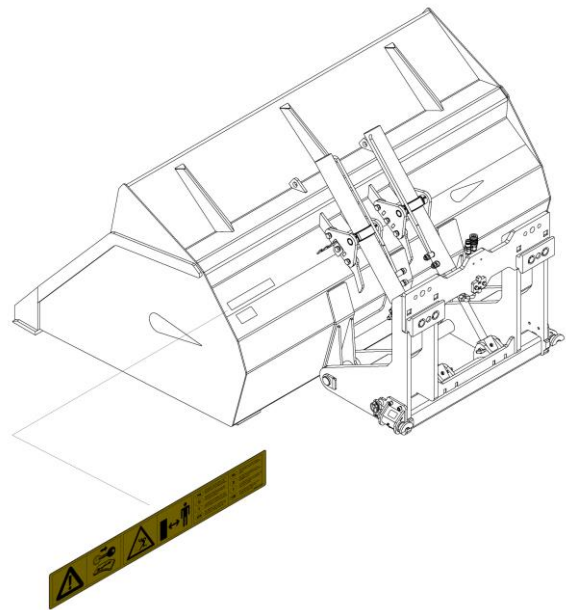


Figure 1.3.5-Place of safety decals for HO-ZIF

## 1.4 Purpose of use

The WIFO hydraulic HO bulk scoop buckets are very suitable for scooping and transporting grain, fertiliser, potting compost, etc., due to the non rounded sides. The HO bulk bucket is highly suitable for industrial applications due to its special bucket shape, large capacity and manoeuvrability.



### **CAUTION:**


*The capacity of the forklift or lifting mast must be greater than the total mass of the scoop bucket and load. The lift truck or lift mast must be equipped with at least one double-acting hydraulic connection on the fork carriage.*

**The hydraulic bulk scoop bucket must definitely not be used for passenger transport!**

## 1.5 Liability

These instructions must be read by all persons working on and with this machine. Furthermore, they must only use the machine for its intended purpose. This includes the following points:

1. Work must only be carried out in accordance with the instructions and within the functional limits (e.g. max. hydraulic working pressure) as laid down in the regulations. Sound and proper tools must be used.
2. Electrical / electronic equipment including accessories (e.g. cables) must be handled according to the general operating rules for non-watertight portable electrical and electronic equipment, which means, among other things:
  - a) Store and keep in clean, dry surroundings and out of reach of rodents, etc.
  - b) Protect the equipment from hard, undamped shocks and from getting wet (rain).
3. Only original or equivalent replacement parts may be used, which must be fitted according to specifications (e.g. the specified tightening torques). A part (or lubricant) is considered equivalent if it has been expressly approved by WIFO or if it can be shown to have the properties required for the function(s) in question.
4. Always use lubricants that meet the specifications as described in the manual.
5. The locally applicable accident prevention, safety, traffic and transport regulations must be observed at all times.
6. Only people who know the machine and are aware of possible dangers may work with and/or on the machine.
7. Changes to the machine that have not been explicitly approved by WIFO exclude any liability on the part of WIFO-Anema B.V. with regard to possible damage.

|  |  |
|--|--|
|  | <p><b><i>Failure to follow the rules and instructions in this manual constitutes gross negligence, which cancels any liability on the part of WIFO-Anema B.V. for all resulting consequences. The risk then lies entirely and exclusively with the user.</i></b></p> |
|  | <p><b><i>WIFO-Anema B.V. is constantly engaged in improving its products. It therefore reserves the right to make all changes and improvements it deems necessary. There is no obligation to apply these to previously delivered machines.</i></b></p>               |

## 1.6 Warranty

WIFO-Anema B.V. vouches for the soundness of the items it supplies with regard to material and/or construction faults. However, this guarantee is limited in all cases to replacing or repairing the defective article or part thereof free of charge. WIFO-Anema B.V. cannot be held responsible for any damage or costs resulting from faulty delivery and/or defective items supplied by us within the guarantee period. **The guarantee period is one year.**

## 2. Technical data

### 2.1 General technical data

| Type | HO-125 | HO-150 | HO-175 | HO-200 | HO-225 |
|------|--------|--------|--------|--------|--------|
|------|--------|--------|--------|--------|--------|

|  |          |          |          |          |          |
|--|----------|----------|----------|----------|----------|
| Contents                                   | 900 L    | 1100 L   | 1300 L   | 1500 L   | 1700 L   |
| Weight                                     | 415 kg   | 445 kg   | 475 kg   | 505 kg   | 535 kg   |
| Centre of gravity                          | 775 mm   | 785 mm   | 795 mm   | 805 mm   | 815 mm   |
| Centre of gravity combination <sup>1</sup> | 1250 mm  | 1500 mm  | 1750 mm  | 2000 mm  | 2250 mm  |
| Width                                      | 1300 mm  | 1300 mm  | 1300 mm  | 1300 mm  | 1300 mm  |
| Depth                                      | 860 mm   | 860 mm   | 860 mm   | 860 mm   | 860 mm   |
| Height                                     | 180 bar  | 180 bar  | 180 bar  | 180 bar  | 180 bar  |
| Max. working pressure                      | 53°/ 28° | 53°/ 28° | 53°/ 28° | 53°/ 28° | 53°/ 28° |
| Tilt angle <sup>2</sup>                    | 900 L    | 1100 L   | 1300 L   | 1500 L   | 1700 L   |

**Table 2.1.1-Features of WIFO HO bulk bins**

| Type                                       | HO-125F  | HO-150F  | HO-175F  | HO-200F  | HO-225F  |
|--|----------|----------|----------|----------|----------|
| Capacity                                   | 900 L    | 1100 L   | 1300 L   | 1500 L   | 1700 L   |
| Weight                                     | 420 kg   | 450 kg   | 480 kg   | 510 kg   | 540 kg   |
| Centre of gravity                          | 645 mm   | 670 mm   | 690 mm   | 710 mm   | 725 mm   |
| Centre of gravity combination <sup>1</sup> | 1250 mm  | 1500 mm  | 1750 mm  | 2000 mm  | 2250 mm  |
| Width                                      | 1300 mm  | 1300 mm  | 1300 mm  | 1300 mm  | 1300 mm  |
| Depth                                      | 860 mm   | 860 mm   | 860 mm   | 860 mm   | 860 mm   |
| Height                                     | 180 bar  | 180 bar  | 180 bar  | 180 bar  | 180 bar  |
| Max. working pressure                      | 77°/ 33° | 77°/ 33° | 77°/ 33° | 77°/ 33° | 77°/ 33° |
| Tilt angle <sup>2</sup>                    | 900 L    | 1100 L   | 1300 L   | 1500 L   | 1700 L   |

**Table 2.1.2-Features of WIFO HO-F buckets**

| Type                                       | HO-200-ZI | HO-225-ZI | HO-250-ZI | HO-275-ZI | HO-300-ZI |
|--|-----------|-----------|-----------|-----------|-----------|
| Capacity                                   | 1950 L    | 2200 L    | 2450 L    | 2700 L    | 2950 L    |
| Weight                                     | 840 kg    | 890 kg    | 940 kg    | 990 kg    | 1040 kg   |
| Centre of gravity                          | 910 mm    | 920 mm    | 930 mm    | 940 mm    | 950 mm    |
| Centre of gravity combination <sup>1</sup> | 2000 mm   | 2250 mm   | 2500 mm   | 2750 mm   | 3000 mm   |
| Width                                      | 1465 mm   | 1465 mm   | 1465 mm   | 1465 mm   | 1465 mm   |
| Depth                                      | 1150 mm   | 1150 mm   | 1150 mm   | 1150 mm   | 1150 mm   |
| Height                                     | 180 bar   | 180 bar   | 180 bar   | 180 bar   | 180 bar   |
| Max. working pressure                      | 52°/ 32°  | 52°/ 32°  | 52°/ 32°  | 52°/ 32°  | 52°/ 32°  |
| Tilt angle <sup>2</sup>                    | 1950 L    | 2200 L    | 2450 L    | 2700 L    | 2950 L    |

**Table 2.1.3-Features of WIFO HO-ZI scoop buckets**

| Type                                       | HO-200-ZIF | HO-225-ZIF | HO-250-ZIF | HO-275-ZIF | HO-300-ZIF |
|--|------------|------------|------------|------------|------------|
| Capacity                                   | 1950 L     | 2200 L     | 2450 L     | 2700 L     | 2950 L     |
| Weight                                     | 917 kg     | 970 kg     | 1015 kg    | 1070 kg    | 1120 kg    |
| Centre of gravity                          | 805 mm     | 825 mm     | 840 mm     | 855 mm     | 865 mm     |
| Centre of gravity combination <sup>1</sup> | 2000 mm    | 2250 mm    | 2500 mm    | 2750 mm    | 3000 mm    |
| Width                                      | 1500 mm    | 1500 mm    | 1500 mm    | 1500 mm    | 1500 mm    |
| Depth                                      | 1100 mm    | 1100 mm    | 1100 mm    | 1100 mm    | 1100 mm    |
| Height                                     | 180 bar    | 180 bar    | 180 bar    | 180 bar    | 180 bar    |
| Max. operating pressure                    | 54°/ 44°   | 54°/ 44°   | 54°/ 44°   | 54°/ 44°   | 54°/ 44°   |
| Tilt angle <sup>2</sup>                    | 1950 L     | 2200 L     | 2450 L     | 2700 L     | 2950 L     |

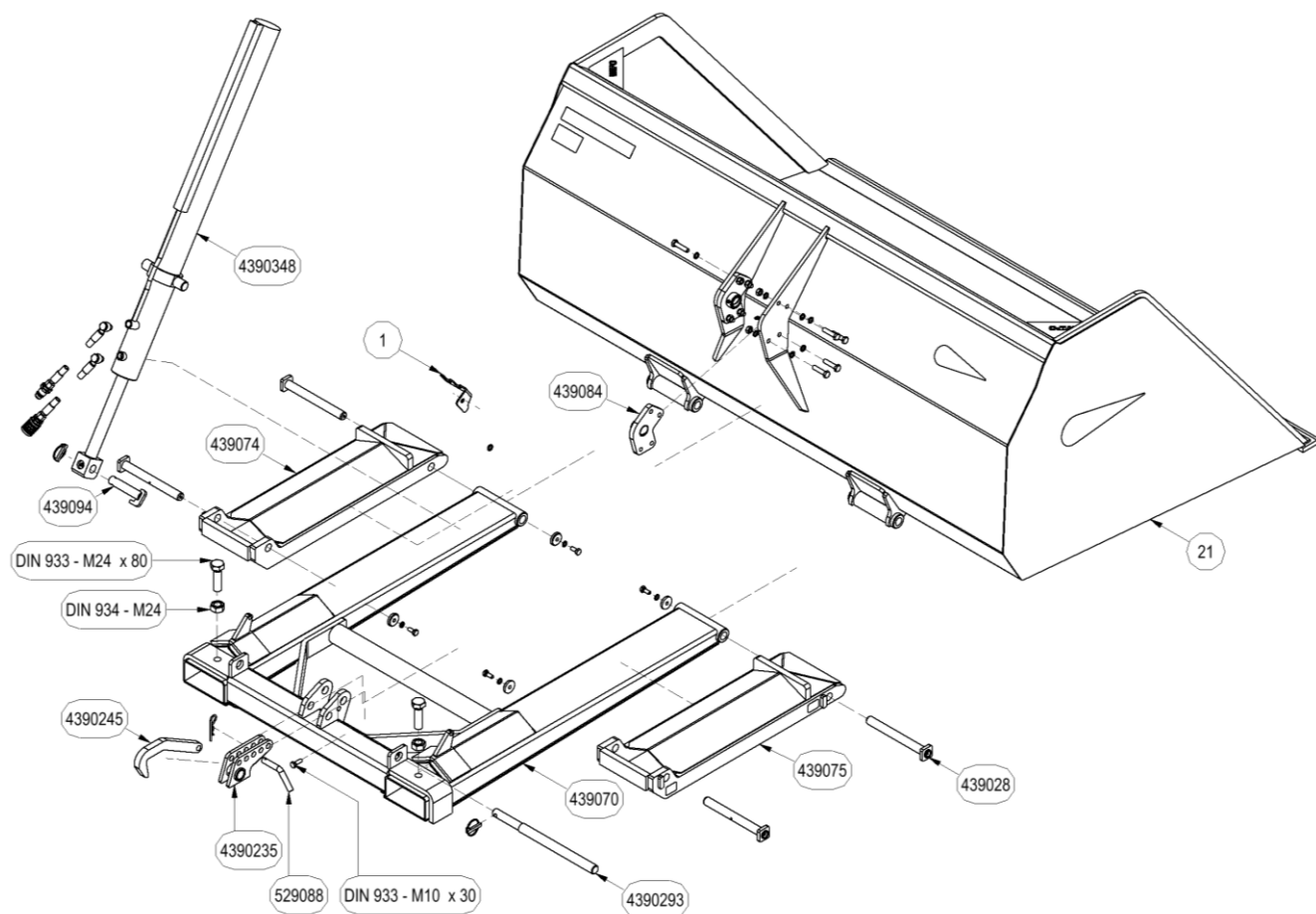
**Table 2.1.4-Features of WIFO HO-ZIF buckets**

<sup>1</sup>Point from which off the residual capacity of the forklift is calculated including the load.

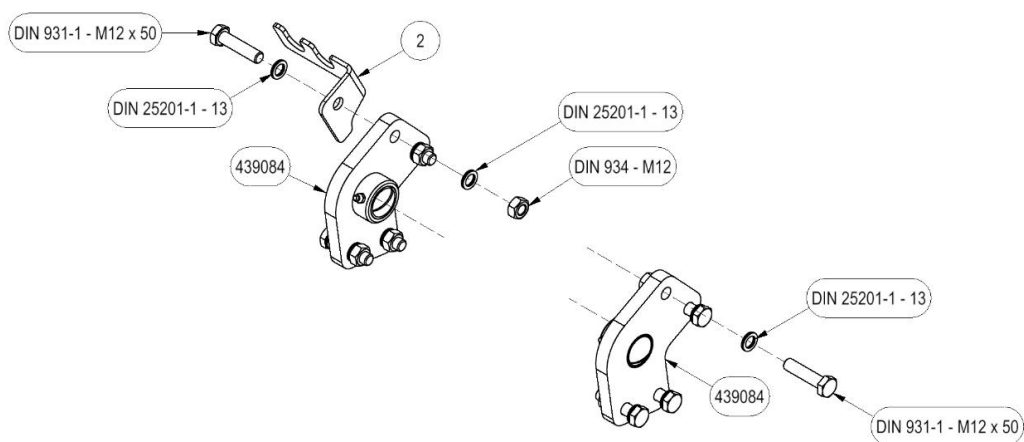
<sup>2</sup>Forward tilt/backward tilt angle.

## 2.2 HO

## 2.2.1 Parts list



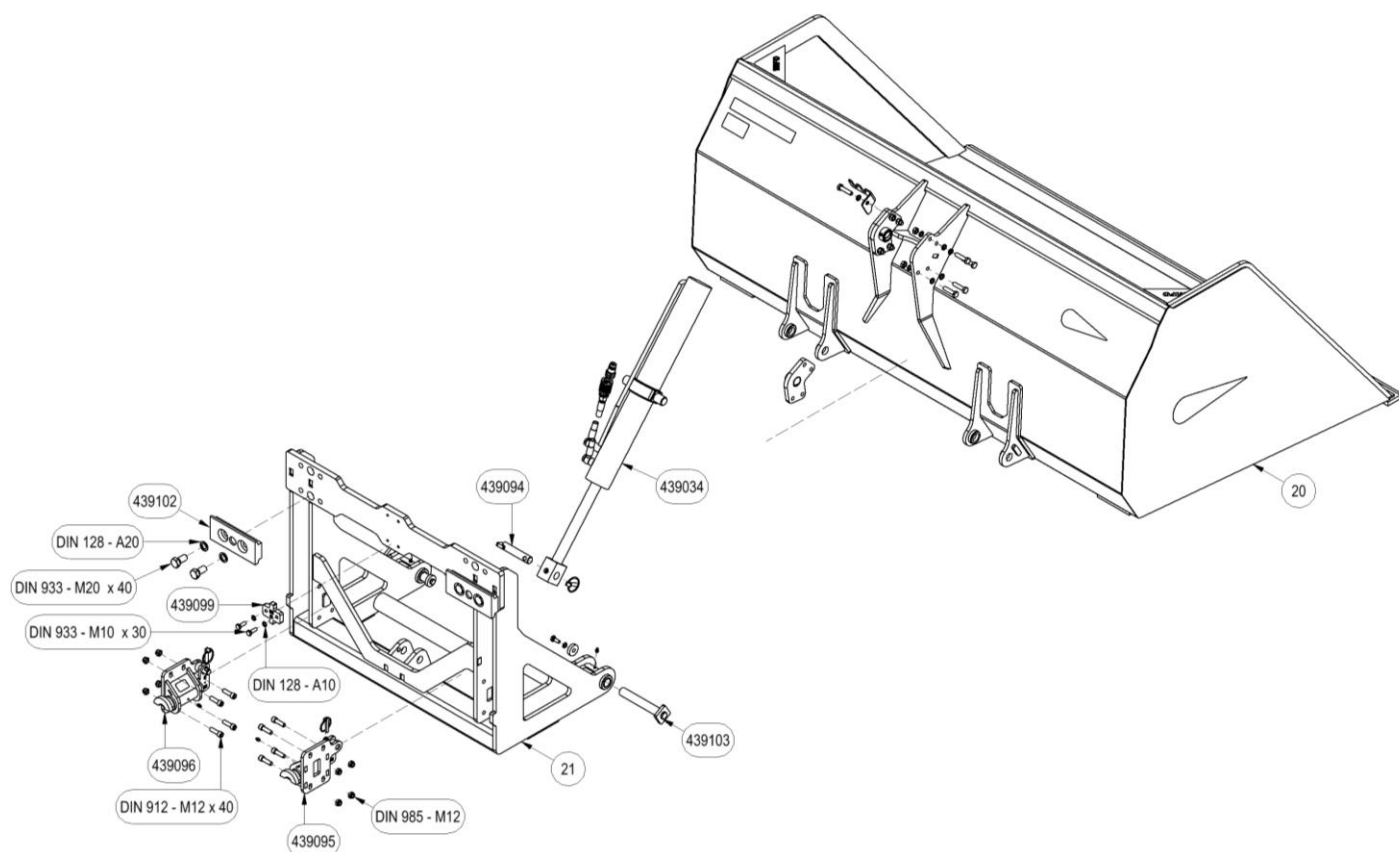
| Description                            | Spare part number |
|--|-------------------|
| HO hose holder                         | 1                 |
| Blocking hook HO-HOD                   | 4390245           |
| Hydraulic cylinder DW 70-35-1000 Block | 4390348           |
| Cylinder pin with locking cam          | 439094            |
| Strip hinge R HO Bulk                  | 439075            |
| Strip hinge L HO Bulk                  | 439074            |
| Pin locking hook 1 cylinder            | 4390293           |
| Blocking hook holder                   | 4390235           |
| Bearing plate HO Bulk                  | 439084            |
| Bucket HO                              | 21                |
| • HO-125 bin                           | -                 |
| • HO-150 bin                           | -                 |
| • HO-175 bin                           | -                 |
| • HO-200 bin                           | -                 |
| • Bucket HO-225                        | -                 |
| Frame HO-HOD                           | 439070            |
| Pin support leg M&S                    | 529088            |
| Swivel pin Ø25 HO-HOD                  | 439028            |



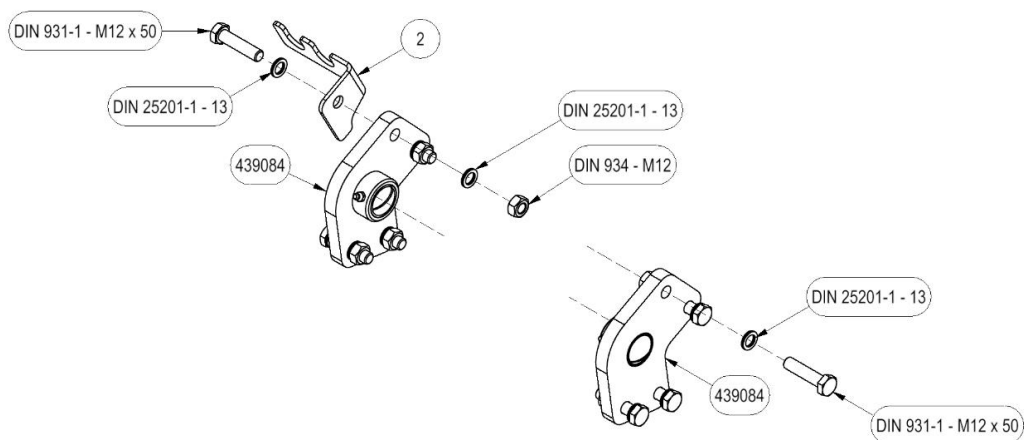
| Description           | Spare part number |
|-----------------------|-------------------|
| HO hose holder        | 2                 |
| Bearing plate HO Bulk | 439084            |

## 2.3 HO-F

### 2.3.1 Parts list



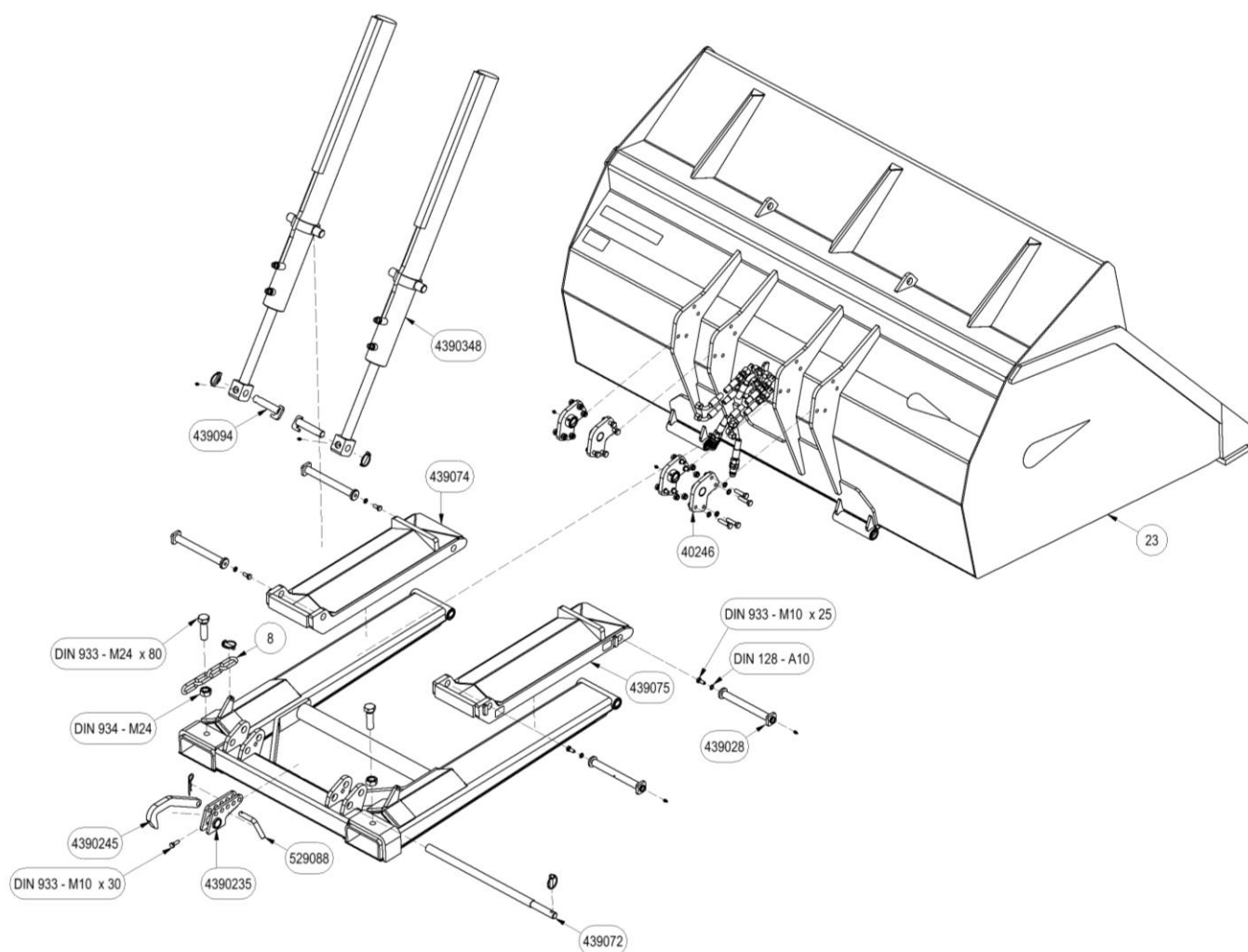
| Description                           | Spare part number |
|---------------------------------------|-------------------|
| Locking strip FEM II - III            | 439099            |
| Hydraulic cylinder DW 70-35-600 right | 439034            |
| Cylinder pin with locking cam         | 439094            |
| Suspension block Frame FEM II-III NM  | 439102            |
| Rotating pin HO(D) FEM                | 439103            |
| Bearing plate HO Bulk                 | 439084            |
| Bucket HO-F                           | 20                |
| • Bucket HO-125F                      | -                 |
| • HO-150F bin                         | -                 |
| • Bucket HO-175F                      | -                 |
| • Bucket HO-200F                      | -                 |
| • Bucket HO-225F                      | -                 |
| Frame FEM II - III HO(D)              | 439101            |
| Screw-on quickw FEM II-III R          | 439096            |
| Screw-on quickw FEM II-III L          | 439095            |



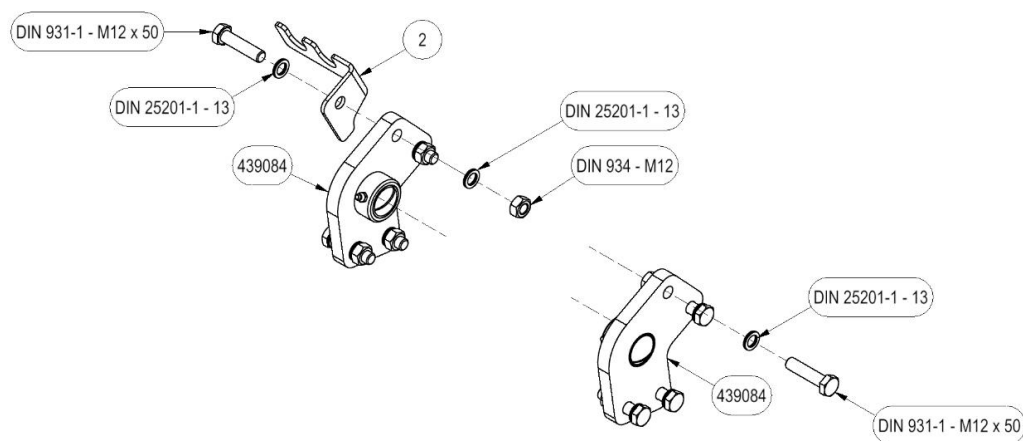
| Description           | Spare part number |
|-----------------------|-------------------|
| HO hose holder        | 2                 |
| Bearing plate HO Bulk | 439084            |

## 2.4 HO-ZI

### 2.4.1 Parts list



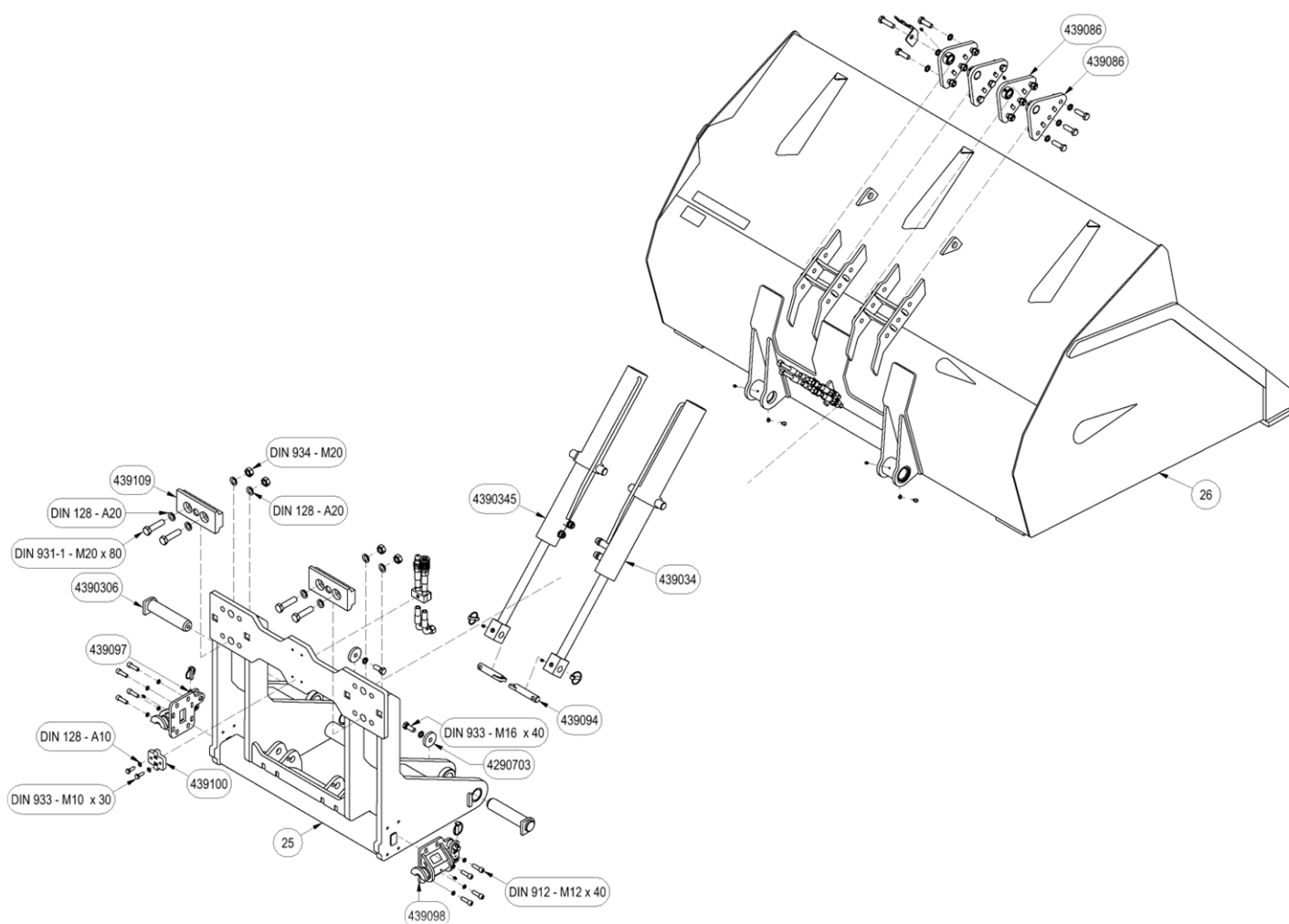
| Description                            | Spare part number |
|--|-------------------|
| Chain LS10-1240 EV                     | 8                 |
| Hydraulic cylinder DW 70-35-1000 Block | 4390348           |
| Cylinder pin with locking cam          | 439094            |
| Strip hinge R HO Bulk                  | 439075            |
| Strip hinge L HO Bulk                  | 439074            |
| Pin locking hook 2 cylinders           | 439072            |
| Blocking hook holder                   | 4390235           |
| Bearing plate HO Bulk                  | 439084            |
| Bucket HO-ZI                           | 23                |
| • Bucket HO-200-ZI                     | -                 |
| • Bucket HO-225-ZI                     | -                 |
| • Bucket HO-250-ZI                     | -                 |
| • Bucket HO-275-ZI                     | -                 |
| • Bucket HO-300-ZI                     | -                 |
| Pin support leg M&S                    | 529088            |
| Swivel pin Ø25 HO-HOD                  | 439028            |



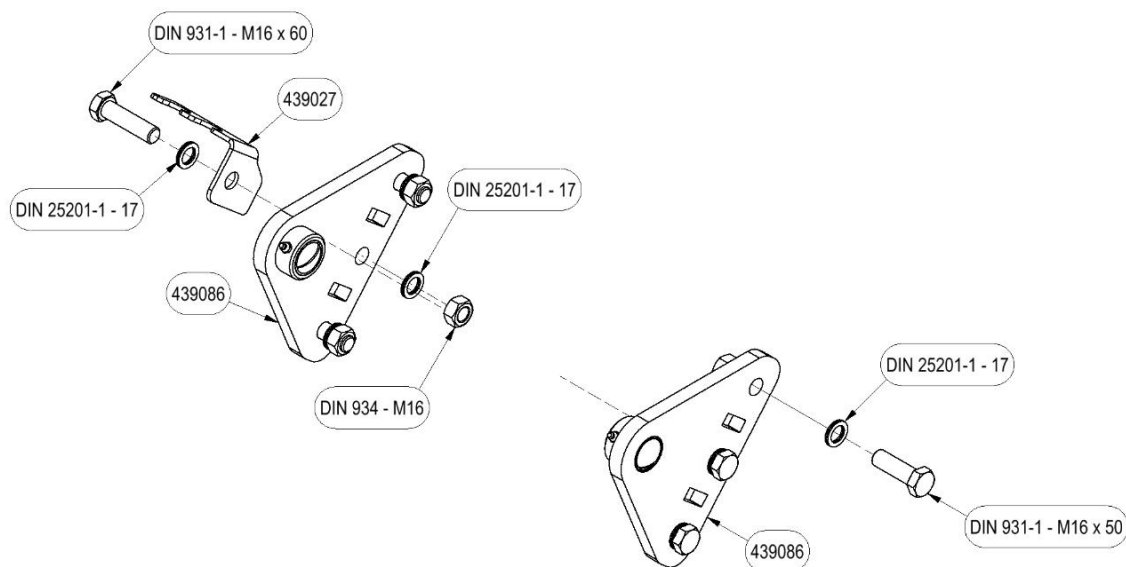
| Description           | Spare part number |
|-----------------------|-------------------|
| HO hose holder        | 2                 |
| Bearing plate HO Bulk | 439084            |

## 2.5 HO-ZIF

### 2.5.1 Parts list



| Description                           | Spare part number |
|---------------------------------------|-------------------|
| Ring Ø60x10 hole Ø17                  | 4290703           |
| Locking strip FEM III - IV buck       | 439100            |
| Hydraulic cylinder DW 70-35-600 right | 439034            |
| Hydraulic cylinder DW 70-35-600 left  | 4390345           |
| Cylinder pin with locking cam         | 439094            |
| Suspension block Frame FEM III-IV NM  | 439109            |
| Cylinder plate HOD NM R               | 439086            |
| Cylinder plate HOD NM L               | 439086            |
| Swivel pin buck FEM II-III III-IV     | 4390306           |
| Frame HO-ZIF 200-275 FEM 3-4          | 25                |
| Bucket HO-ZIF                         | 26                |
| • Bucket HO-200-ZIF                   | -                 |
| • Bucket HO-225-ZIF                   | -                 |
| • Bucket HO-250-ZIF                   | -                 |
| • Bucket HO-275-ZIF                   | -                 |
| • Bucket HO-300-ZIF                   | -                 |
| Screw-on quick coupler FEM III-IV R   | 439098            |
| Screw-on quick coupler FEM III-IV L   | 439097            |



| Description                    | Spare part number |
|--------------------------------|-------------------|
| Hose holder HOD                | 439027            |
| Cylinder plate HOD-(Z) R (set) | 439086            |
| Cylinder plate HOD-(Z) L (set) | 439086            |

### **2.5.2 Commissioning a hydraulic scoop bucket on forks**

1. Position the forks of the forklift/lift mast at the correct distance (centre to centre 830 mm), such that the hydraulic scoop bucket is centred in front of the forklift/lift mast.
2. Drive the forklift/truck with the forks as far as possible into the fork holders of the scoop bucket.
3. Lock the bucket to the fork carriage of the forklift/lift mast with the locking hook or chain to prevent the scoop bucket from sliding off the forks.
4. When the scoop bucket is slightly raised, the bolts should be screwed in so far that they just barely touch the forks of the forklift or lifting mast. Secure these bolts with the locknuts.
5. Connect the hydraulic hoses and make sure that the quick connectors are thoroughly clean so that no dirt enters the machine's hydraulic system.
6. Next, check that the hydraulic hoses move freely along everything and check that the system does not leak oil.
7. Check the operation of the scoop bucket by operating the hydraulic functions.

### **2.5.3 Commissioning of a hydraulic scoop bucket on forkboard**

1. Remove the forks from the forklift or lift mast.
2. Make sure the forkboard is straight and clean.
3. Place the scoop bucket on the fork carriage of the forklift or lifting mast.
4. Make sure the locking cam falls into the recess in the centre of the fork carriage. If this recess is missing:
  - a) Should this recess be cut in, or
  - b) The locking cam of the brag bucket must be ground away and a proper locking cam fitted in place of an existing recess in the fork carriage. This in such a way that the scoop bucket is centred in front of the fork carriage and cannot slide sideways.
5. Lock the bin to the forkboard by turning the locking levers half a turn so that the forkboard-shaped half-discs clamp behind the forkboard. Secure the levers with the locking spring.
6. Connect the hydraulic hoses and make sure that the quick connectors are thoroughly clean so that no dirt enters the machine's hydraulic system.
7. Next, check that the hydraulic hoses move freely along everything and check that the system does not leak oil.

Check the operation of the scoop bucket by operating the hydraulic functions


**The WIFO ladle tray is now ready for use.**

### 3. Maintenance and faults

This manual contains the necessary safety instructions for maintenance work on the machine. Compliance with these instructions is mandatory to ensure the safety of personnel and to keep the machine in optimal condition.

#### 3.1 General safety regulations

It is compulsory to wear personal protective equipment (PPE) when carrying out maintenance work on the machine. This is to protect against potential hazards such as mechanical hazards, sharp edges, hot surfaces and harmful substances.

|   |  |
|---|--|
|  | <p><b><u>Attention:</u></b><br/> <i>Read the instructions in the manual carefully before performing maintenance on the machine!</i><br/> <i>Stop the engine and remove the key from the ignition as long as there is any work on the machine worked!</i></p> |
|---|--|

#### 3.2 Required Personal Protective Equipment (PPE)

Maintenance personnel should wear at least the following PPE:

- **Safety goggles** - To protect against dust, sparks or flying particles.
- **Gloves** - Suitable for the specific job (cut-resistant, heat-resistant or chemical-resistant gloves, depending on the task).
- **Safety shoes** - With steel or composite toecap and non-slip sole.
- **Hearing protection** - If work takes place in a noisy environment (>80 DB(A)).

#### 3.3 Specific safety measures

- Make sure the scoop bucket is in the lowest position and it is flat on the ground when any maintenance or repair to the scoop bucket takes place.
- Prevent unintended tilting and/or lifting of the scoop bucket during maintenance work by turning off the lift truck or tractor engine and removing the ignition key from the ignition lock.
- Additional measures can be taken by disconnecting the hydraulic hoses.
- Prevent unauthorised persons from entering the work zone.
- Use the right tools and follow the manufacturer's instructions.
- After maintenance, the machine should be checked for correct functioning before being put back into operation.

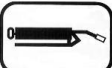
### 3.4 Compliance and responsibility


- Failure to comply with these PPE requirements may result in serious injury or damage.
- Employers and employees are jointly responsible for wearing PPE correctly.
- Regularly check that PPE is in good condition and replace it if necessary.


### 3.5 Preventive maintenance and lubrication

After the first 8 hours of operation:

- Check connections and glands of the hydraulic lines.
- Retighten all bolts.

|   |  |
|---|--|
|  | <p><i>This sticker indicates the position of a grease nipple on the machine. Lubrication should be done after every 10 hours of operation of the machine. The best lubricants are SAE 30 oil and Grade 2 greases based on Lithium.</i></p> |
|---|--|

|  |  |
|--|--|
|  | <p><i>Check the hydraulic section regularly for leaks. Never try to find or even plug a leak by hand. High-pressure fluid easily sprays through skin and clothing and causes serious injuries. If the hydraulic hoses are damaged, they should be replaced to prevent hose breakage and resulting accidents.</i></p> |
|  | <p><i>Regularly check the oil level of your lift truck/tractor's hydraulic system!</i></p>   |

|   |   |
|---|---|
|  | <p><i>If other problems arise, it is best to contact your dealer. They will be happy to assist you.</i></p> |
|---|---|

### 3.6 Work to be performed by a skilled mechanic

#### 3.6.1 Instructions for replacing blade and/or slice strips

Take adequate safety measures for grinding and welding work (fire hazard, personal protection, etc. )

1. Disconnect all hydraulic hoses.
2. Use suitable lifting equipment and place the bucket on a firm and level surface, such that the blade and wear strips are easily accessible. Avoid damaging the cylinder and adequately support the bucket.
3. Grind off the old blade and/or wear strips and remove the welds from the tray.

#### **Knife:**

4. Place the new blade straight and flush under the tray.
  - a) The sharp edge of the blade should (the machine seen in the position when scooping) point forward and be at the bottom.
  - b) The overlap of the blade and the tray is 40mm for a 80mmx15mm manganese blade and 75mm for a 150mmx20mm boron blade. (See figure 3.3.1)
5. Weld the top of the blade along its entire length (A-height = 4).
6. Weld the back of the blade with weld lengths of 100mm (A-height = 5) and spacing of 150mm.

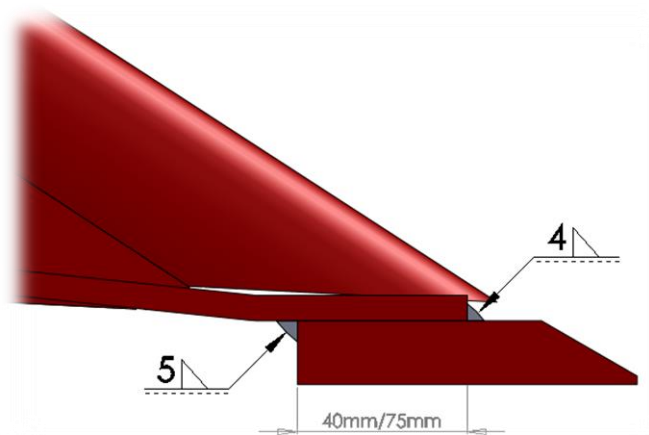


Figure 3.6.1-Overlap blade for hydraulic scooping buckets

#### **Wear strips:**

7. Place the new wear strips straight and flush under the tray.
  - a) The sharp edge of the blade should (the machine seen in the position when scooping) point forward and be at the top.
  - b) Place the wear strips 50mm apart, measured from the side of the bin.
8. Weld the wear strip all around (A-height = 6).

## **EC DECLARATION OF CONFORMITY**

(In accordance with the Machinery Directive 2006/42/EC, Annex II, A)

Name: **WIFO-Anema BV**

Address: **Hegebeintumerdyk 37, 9172GP, Ferwert, Netherlands**

Telephone: **+31 (0)518411318**

E-mail: **info@wifo.nl**

**Declares that the following machine complies with the relevant directives:**

*Typeplaatje WIFO*

### **Machine description:**

The **WIFO HO and HO-ZI** hydraulic bulk scoop bucket is an interchangeable attachment that can be mounted on the forks of the forklift truck as standard. The **WIFO HO-F and HO-ZIF** hydraulic scoop bucket is an interchangeable piece of equipment that can be mounted on an ISO 2328 standardised fork carriage as standard. Both types are suitable for picking up and transporting loose bulk products such as grain, fertiliser and potting soil.

### **Applied European directives:**

- Machinery directive 2006/42/EC

### **Harmonised standards applied:**

- EN ISO 12100:2010 - General safety principles

Name: **Wytze Anema**

Function: **Director**

A handwritten signature in black ink, appearing to read 'Wytze Anema', with a long horizontal line extending to the right.

Location: **Ferwert**

Date: **01-01-2025**